



REGIONE LOMBARDIA - PROVINCIA DI BRESCIA

## COMUNE DI PISOgne

## OGGETTO:

MESSA IN SICUREZZA SCARPATA A MONTE DELL'ALBERGO  
RIZZI IN LOCALITA' VAL PALOT

CUP: D58H24001150002

## COMMITTENTE:

Comune di Pisogne  
Viale Vallecamonica 2  
25055 - Pisogne - BS

## COMMESSA:

L.424.25

## ELABORATO:

L.424.25.PE.B.101

## DATA:

DICEMBRE 2025

## TITOLO:

INQUADRAMENTO TERRITORIALE

## SCALA:

VARIE

## VERSIONE:

DATA

DESCRIZIONE

RED.

VER.

APP.

SPAZIO  
RISERVATO  
ALL'UFFICIO  
TECNICO:

## PROGETTO:

## TECNICO INCARICATO:

Ing. Luca Vitali

via Mazzini, 12/a 25043 - Breno (Brescia)

tel. 0364.21166 - cell. 3939263222

info@ingvitali.it - www.studioingegneriavitali.it

p.iva 02266370986 - c.f. VTLLGR73S11B149F



IL R.U.P.:

IL SINDACO:

## TOLLERANZE:

TUTTE LE MISURE SI INTENDONO +/- 0.01 MT, SE NON DIVERSAMENTE SPECIFICATO

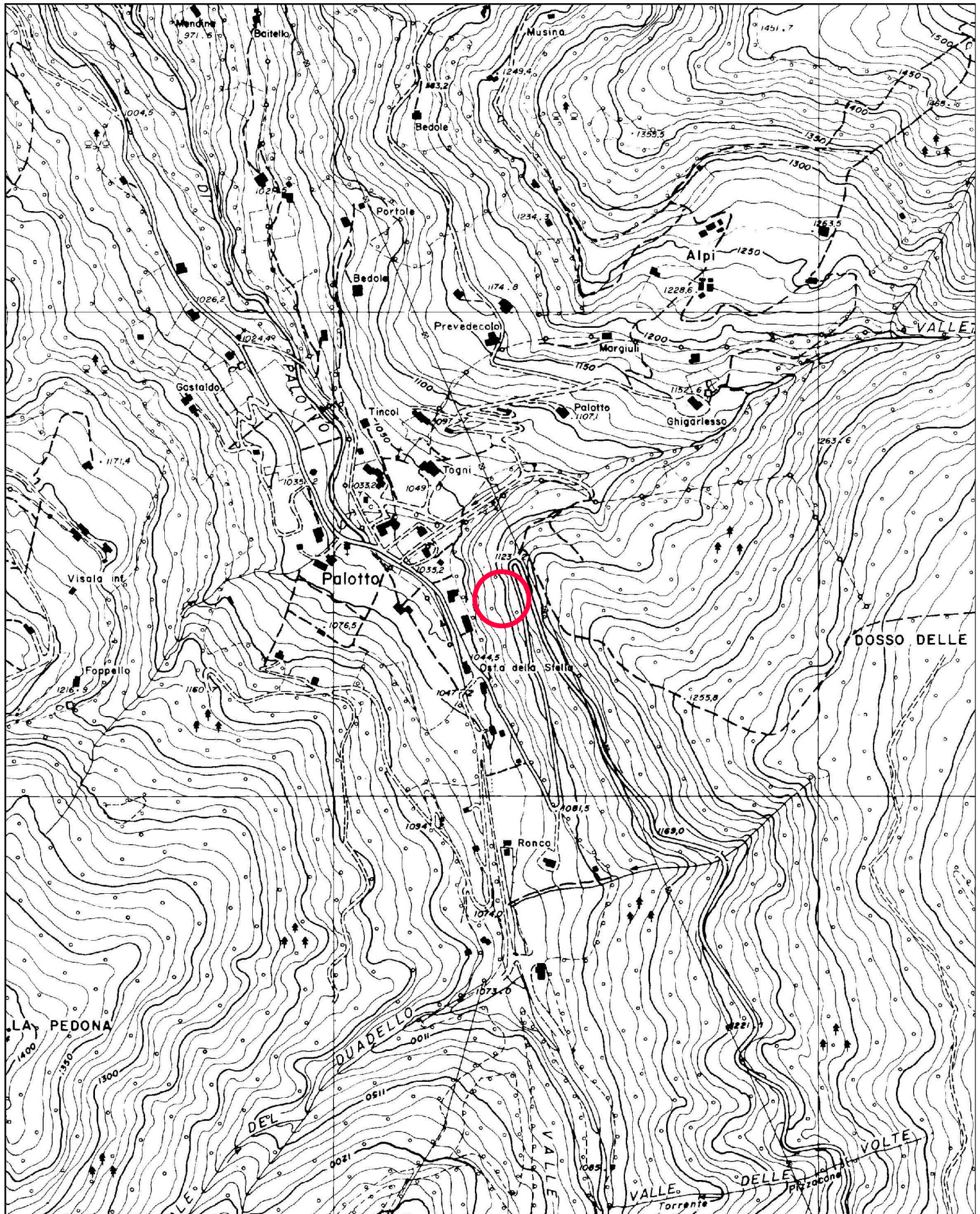


ORTOFOTO - SCALA 1:5.000





CTR - SCALA 1:10.000

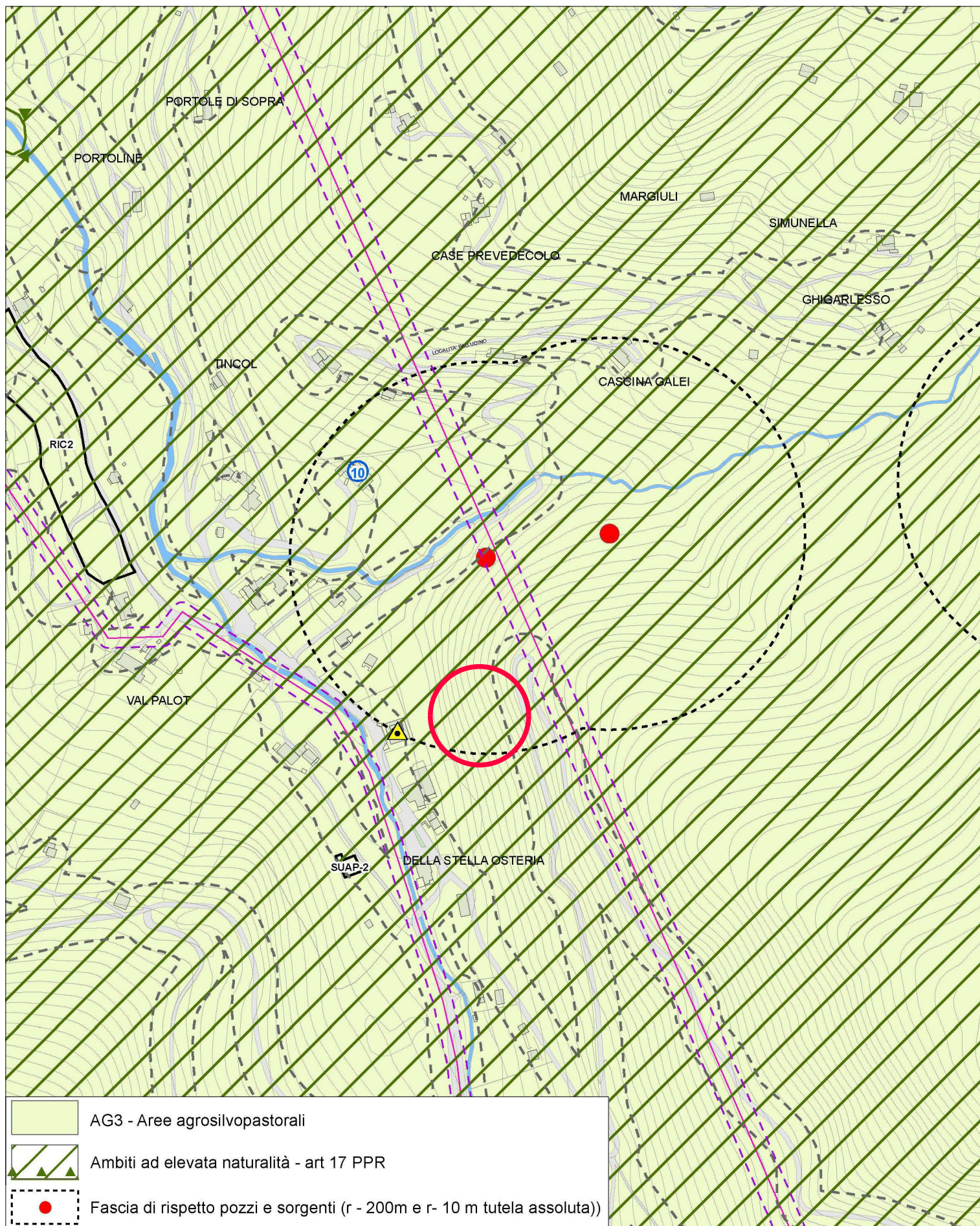




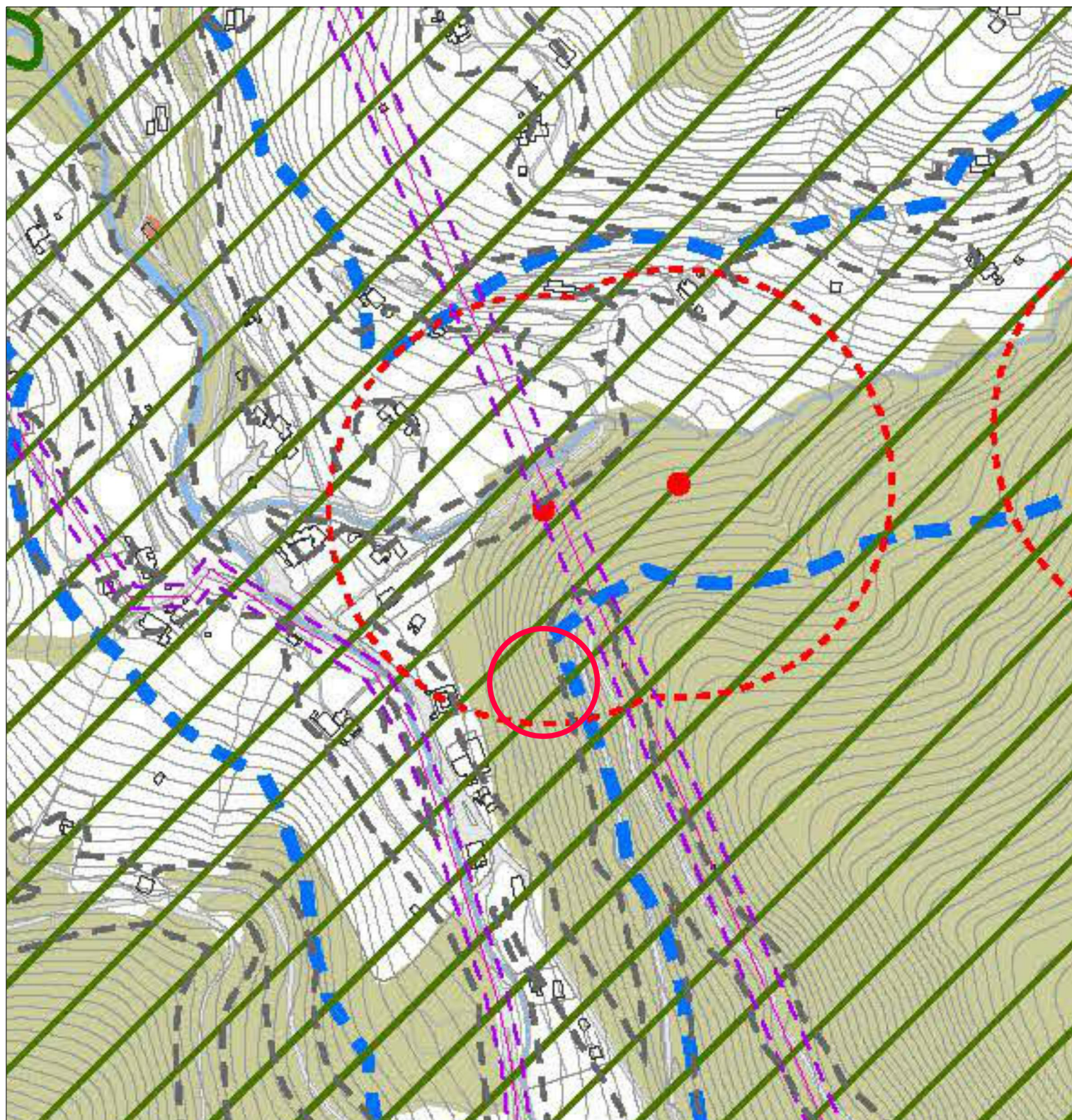
This is a topographic map of a mountainous region. The map features contour lines indicating elevation, with labels such as 4066, 4143, 4135, 4134, 4069, 4123, 4124, 4125, 4116, 4117, 4140, 4141, 4137, 4138, 4139, 4142, 4143, 4144, 4145, 4146, 4147, 4148, 4149, 4150, 4151, 4152, 4153, 4154, 4155, 4156, 4157, 4158, 4159, 4160, 4161, 4162, 4163, 4164, 4165, 4166, 4167, 4168, 4169, 4170, 4171, 4172, 4173, 4174, 4175, 4176, 4177, 4178, 4179, 4180, 4181, 4182, 4183, 4184, 4185, 4186, 4187, 4188, 4189, 4190, 4191, 4192, 4193, 4194, 4195, 4196, 4197, 4198, 4199, 4200. A red circle is drawn around a point near the center of the map, indicating a specific location of interest. The map also shows buildings, roads, and other geographical features. A red circle is drawn around a point near the center of the map, indicating a specific location of interest.

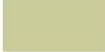





# PGT - CARTA DELLE REGOLE - SCALA 1:5.000

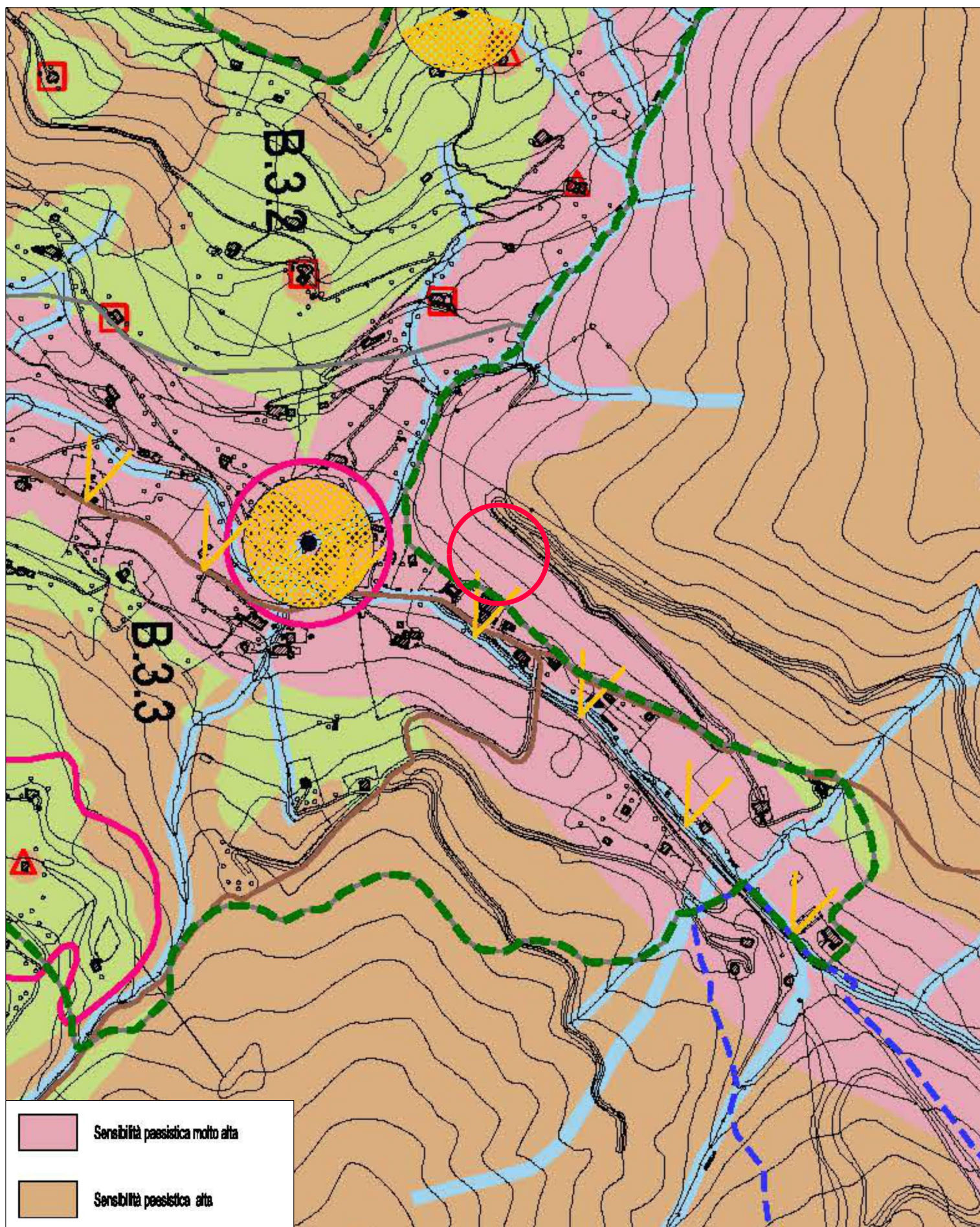




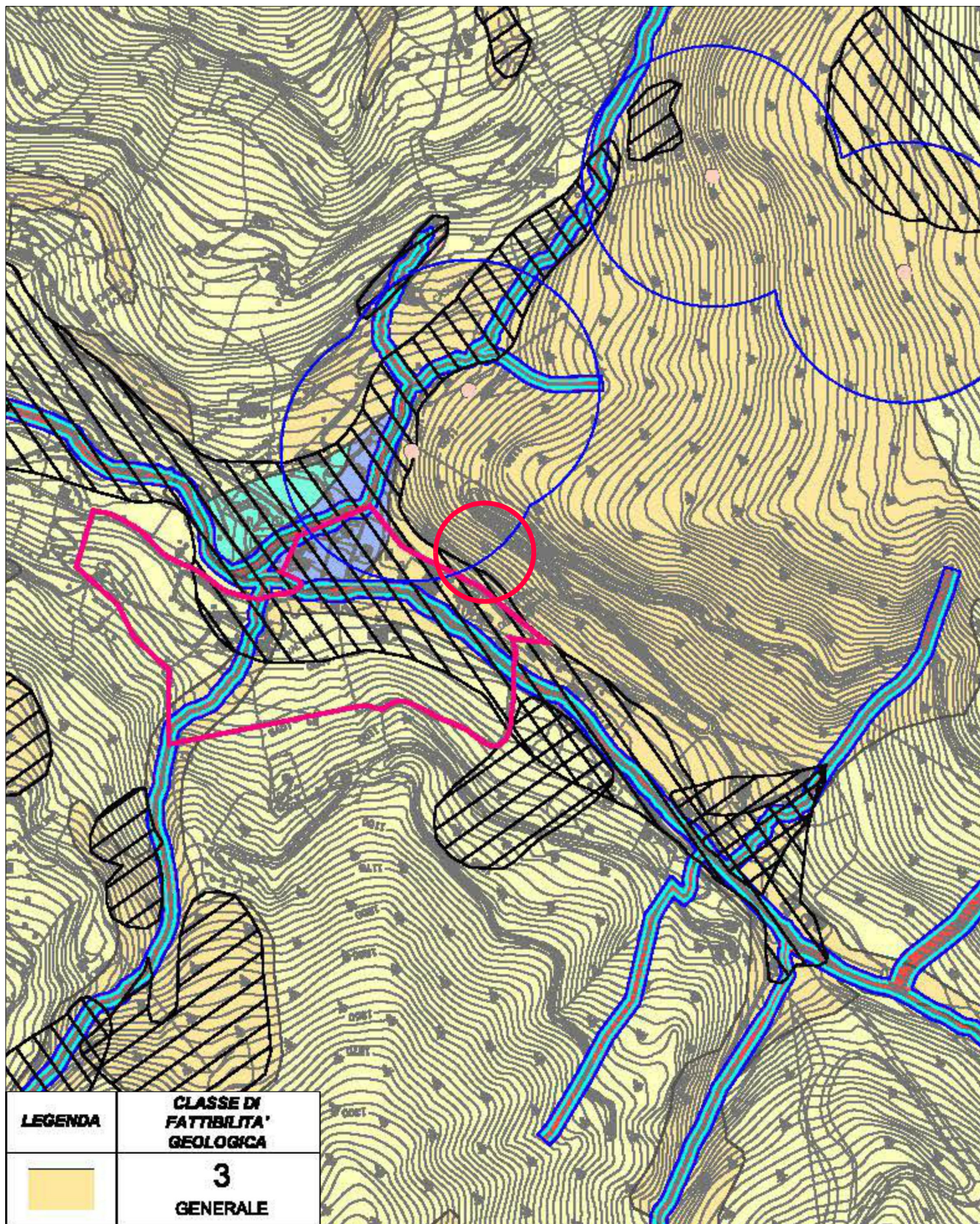


-  Boschi - art.142 c.1 lett.g D.Leg.42/04 (Fonte SIBA)
-  Fascia di rispetto 150 metri da fiumi e torrenti - art.142 c.1 lett. c D.Leg 42/04 (Fonte SIBA)
-  Ambiti ad elevata naturalità - art. 17 PTR
-  Fascia di rispetto pozzi e sorgenti (r - 200m e r- 10 m tutela assoluta)











PIF - TRASFORMAZIONI AMMESSE - SCALA 1:15.000

