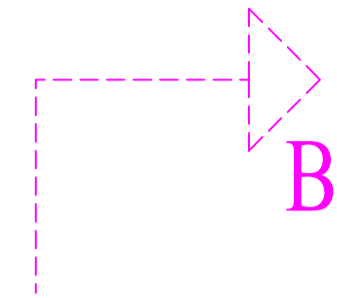
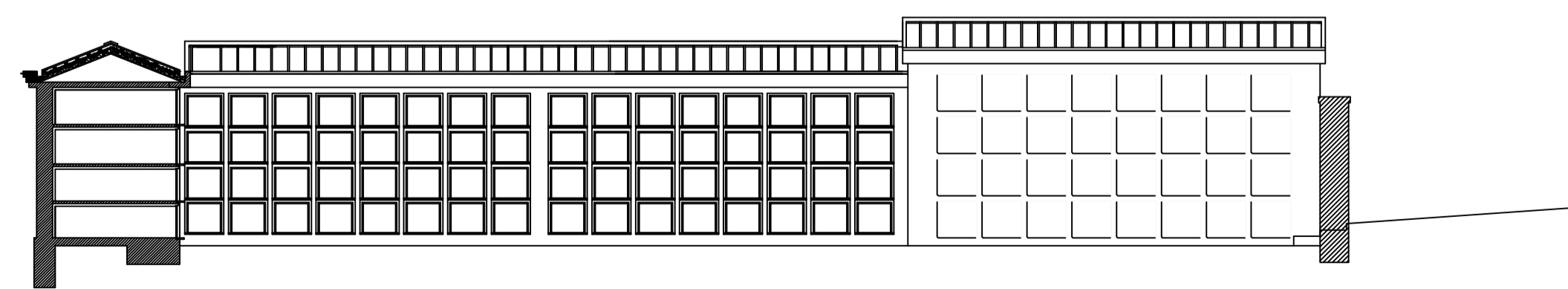
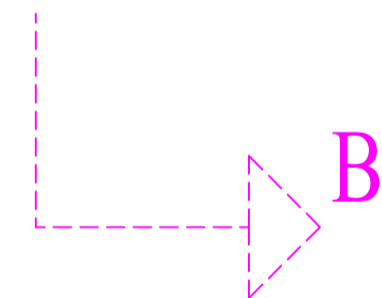
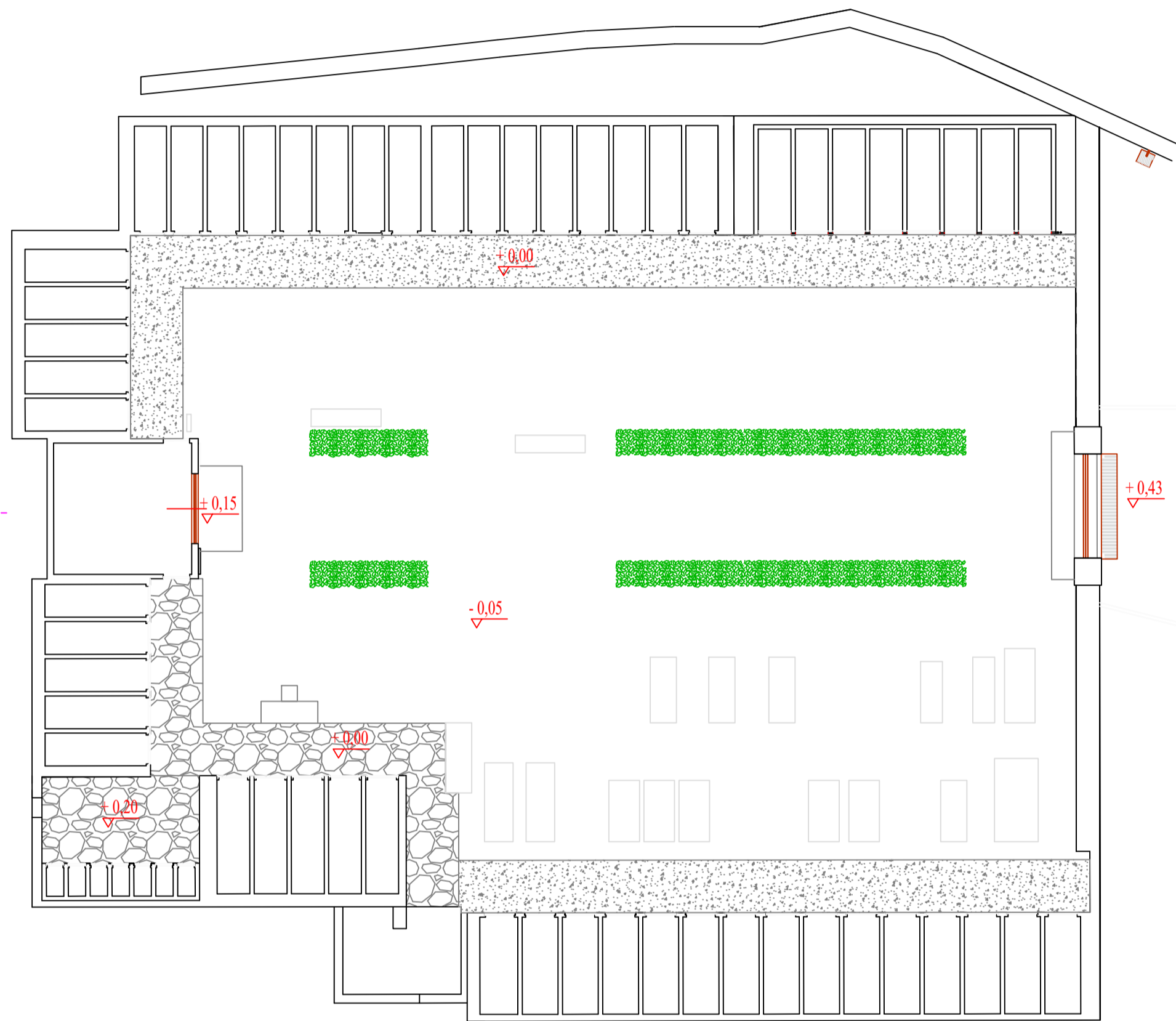
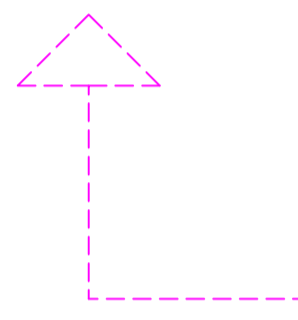


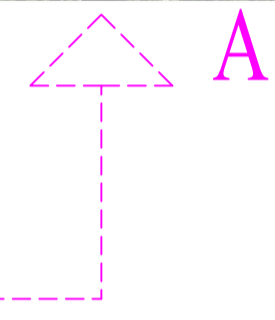
PLANIMETRIA



A



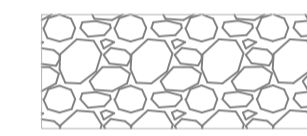
SEZIONE A-A



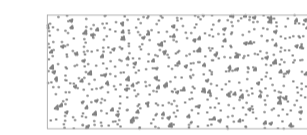
FOTOGRAFIA 1



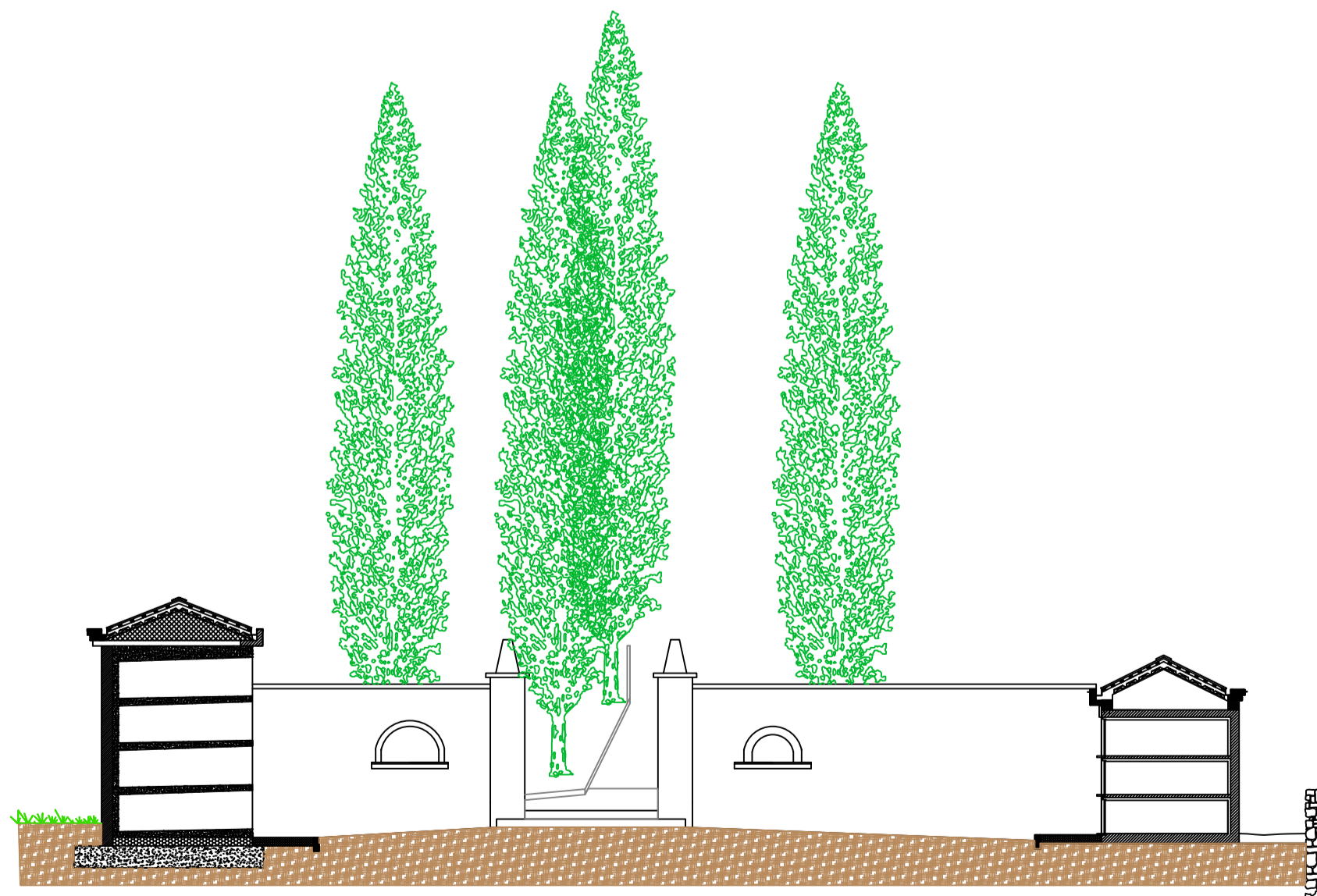
ESTRATTO FOTOGRAMMETRICO



Pavimentazione in porfido posato ad opus incertum



Pavimentazione in cemento



SEZIONE B-B



COMUNE DI PISOGLNE
PROVINCIA DI BRESCIA
Viale Vallecarnonica, 2, 25055 Pisogne
Tel. 0364 88302121 - Fax 0364 8830240
C.F. - P.IVA : 00377510177
protocollo@pec.comune.pisogne.bs.it
info@comune.pisogne.bs.it
http://www.comune.pisogne.bs.it



PROGETTO DEFINITIVO - ESECUTIVO

INTERVENTO DI ADEGUAMENTO ED
ABBATTIMENTO DELLE BARRIERE
ARCHITETTONICHE E RIFACIMENTO VIALI
INTERNI AL CIMITERO COMUNALE DELLA
FRAZIONE DI TOLINE
CUP: D52F22000940004

OGGETTO TAVOLA:
STATO DI FATTO
SCALA 1:100

TAVOLA
N.

01

UFFICIO TECNICO COMUNALE

Responsabile di Area: Venturini Angelo Giuseppe
Progettisti: Ing. Venturini Angelo Giuseppe e Arch. Lambertenghi Dario

Data: Dicembre 2022