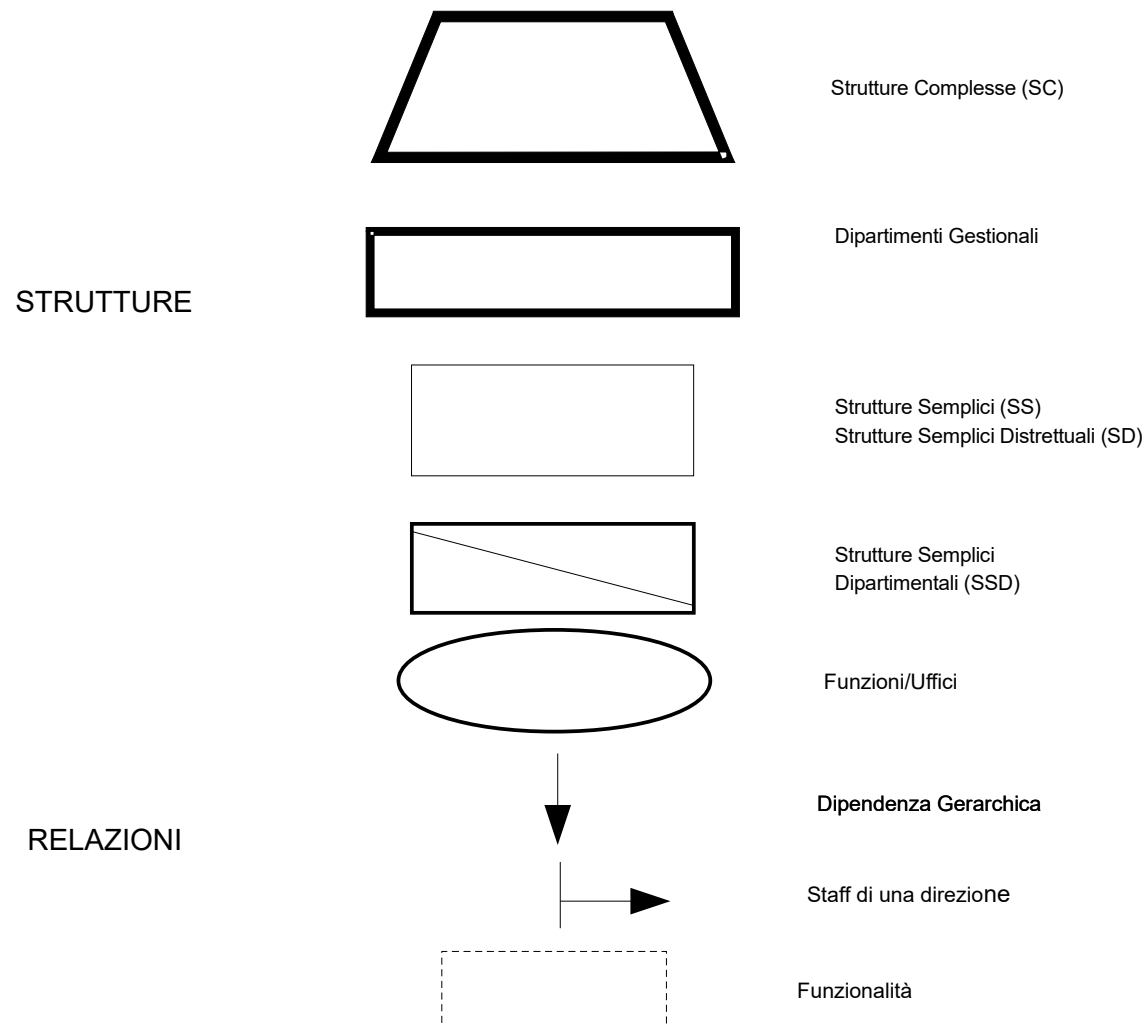
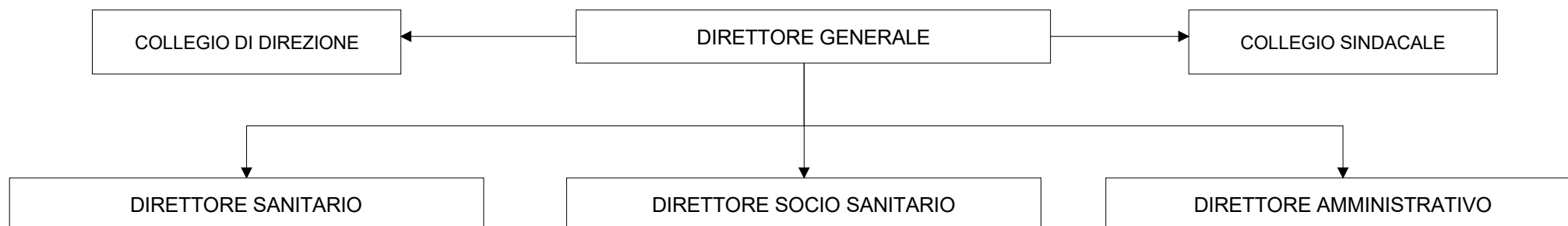
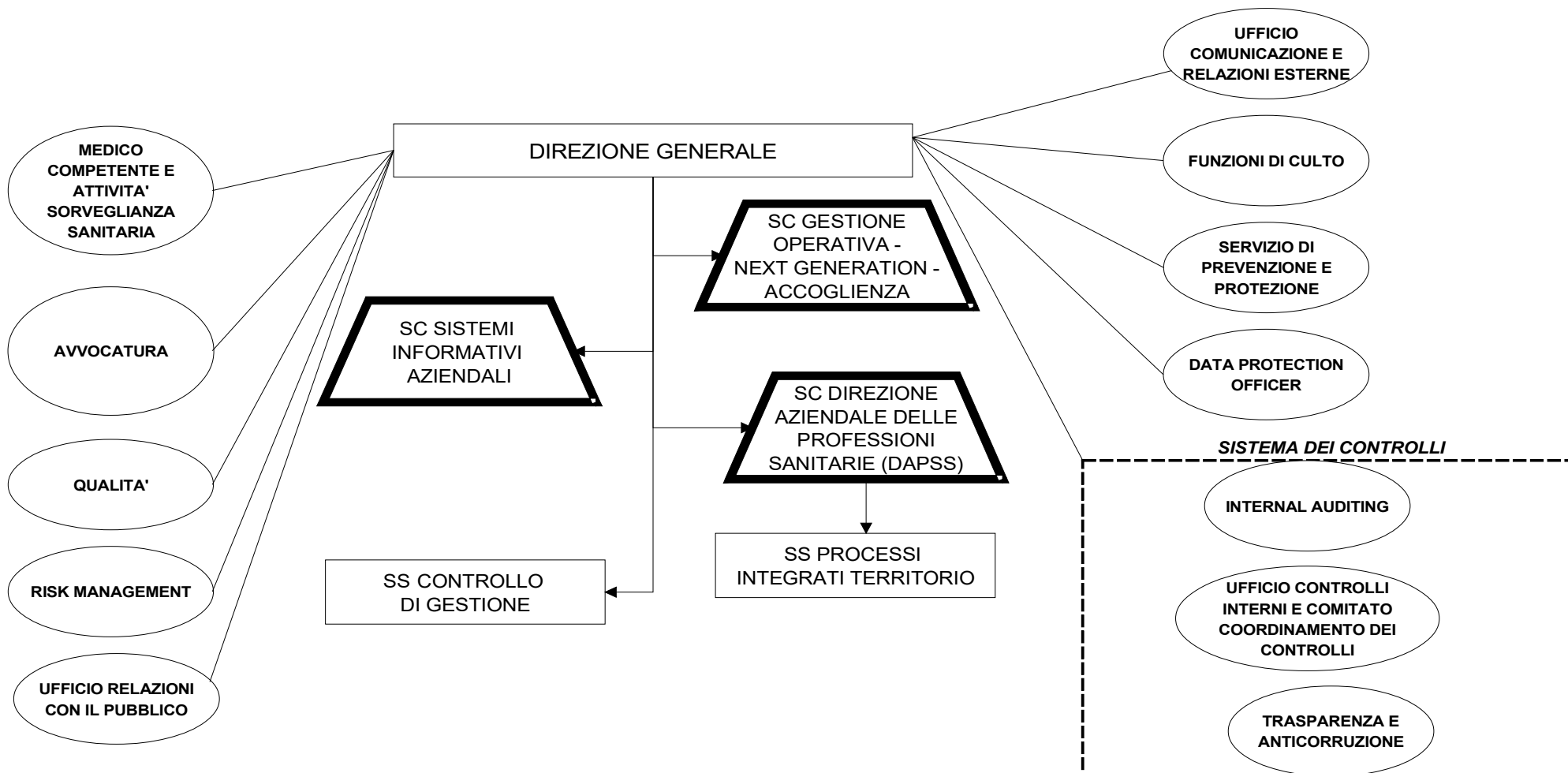


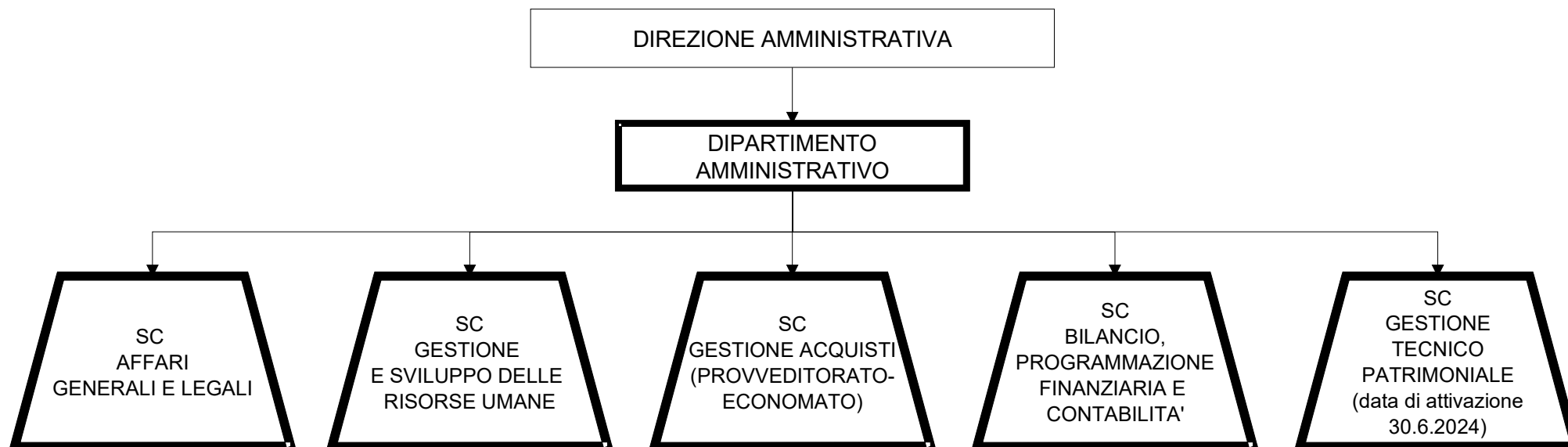
LEGENDA

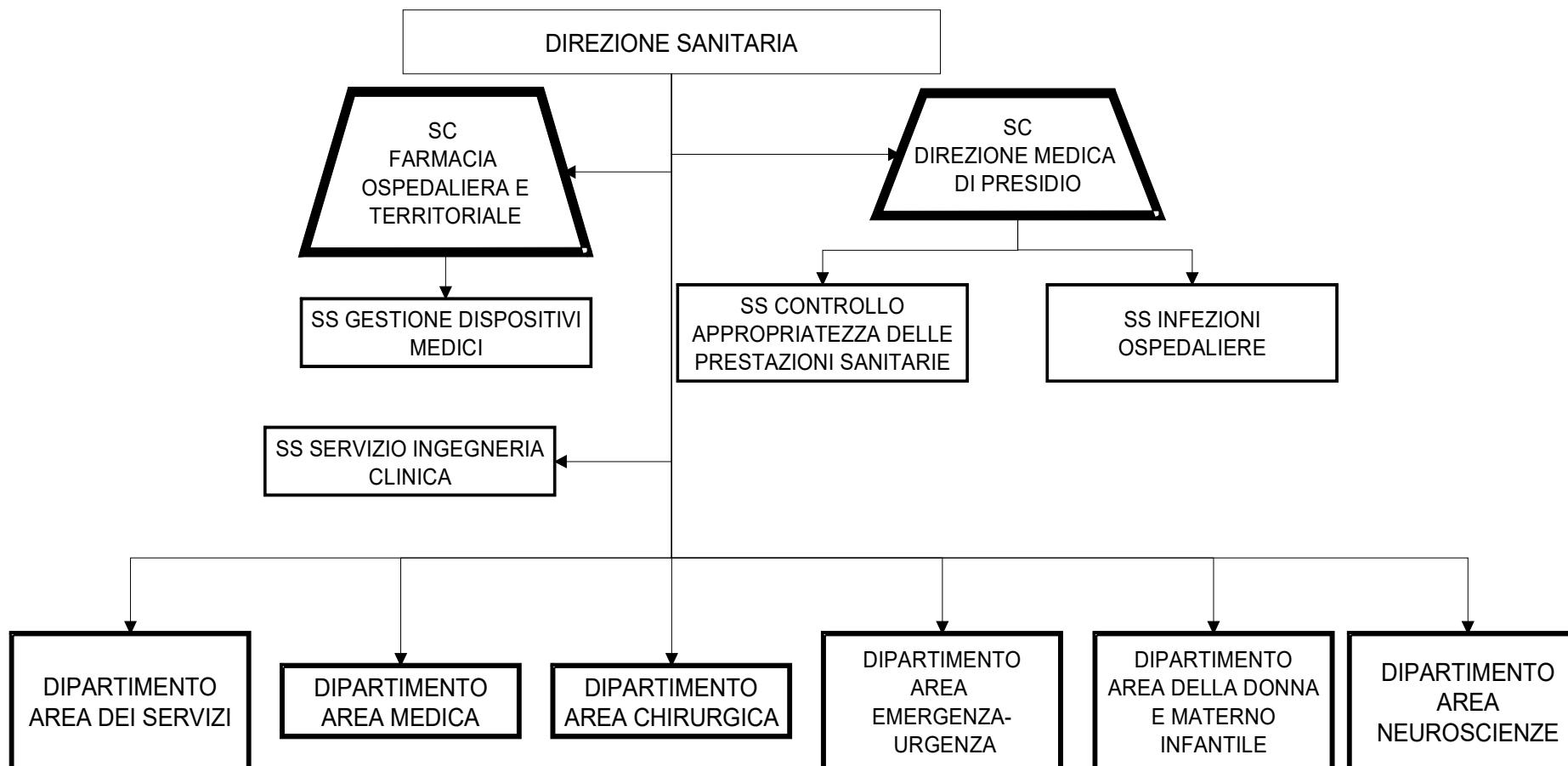


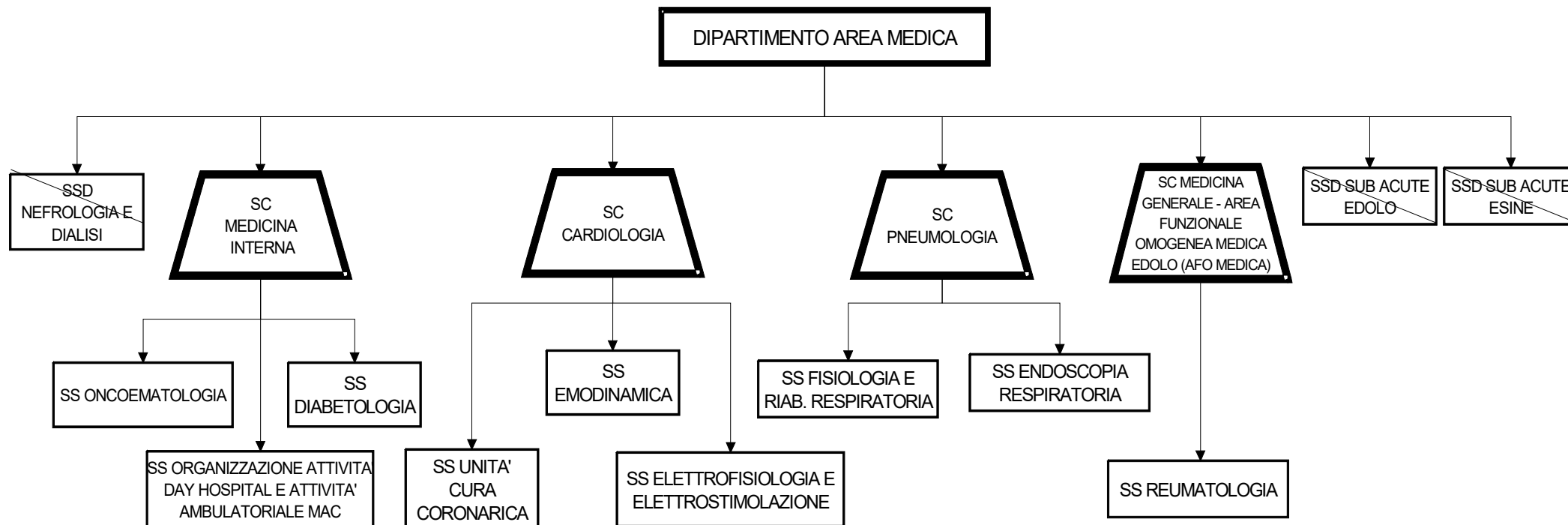
**ORGANI E
DIREZIONE STRATEGICA**

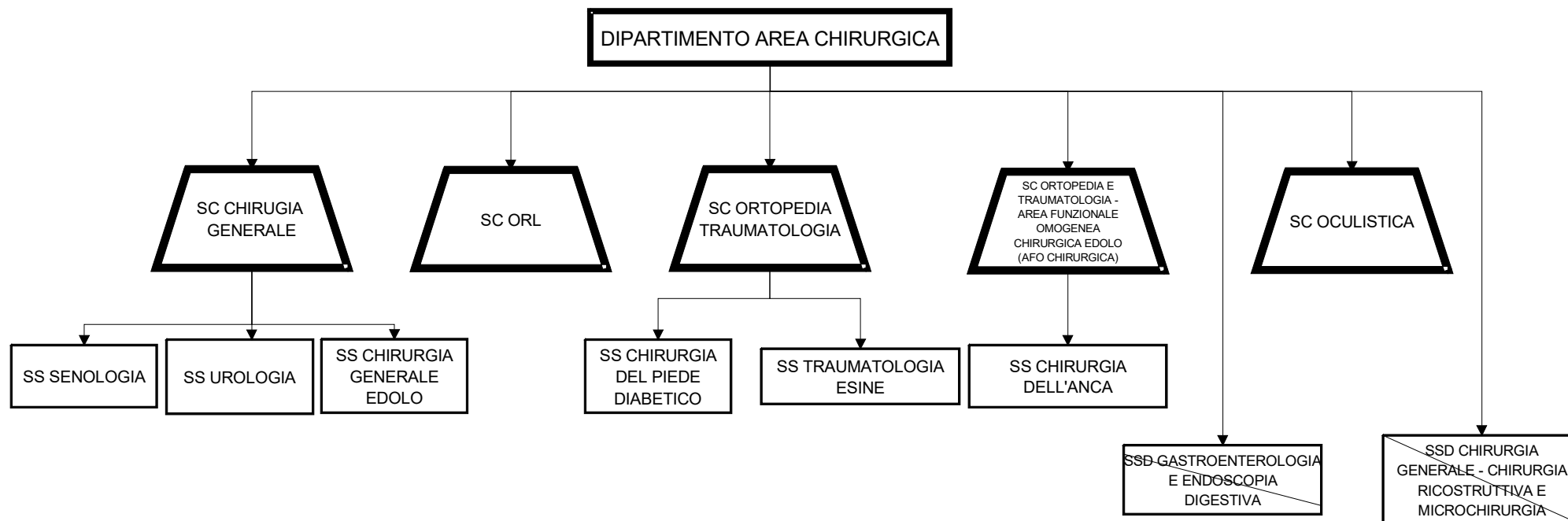


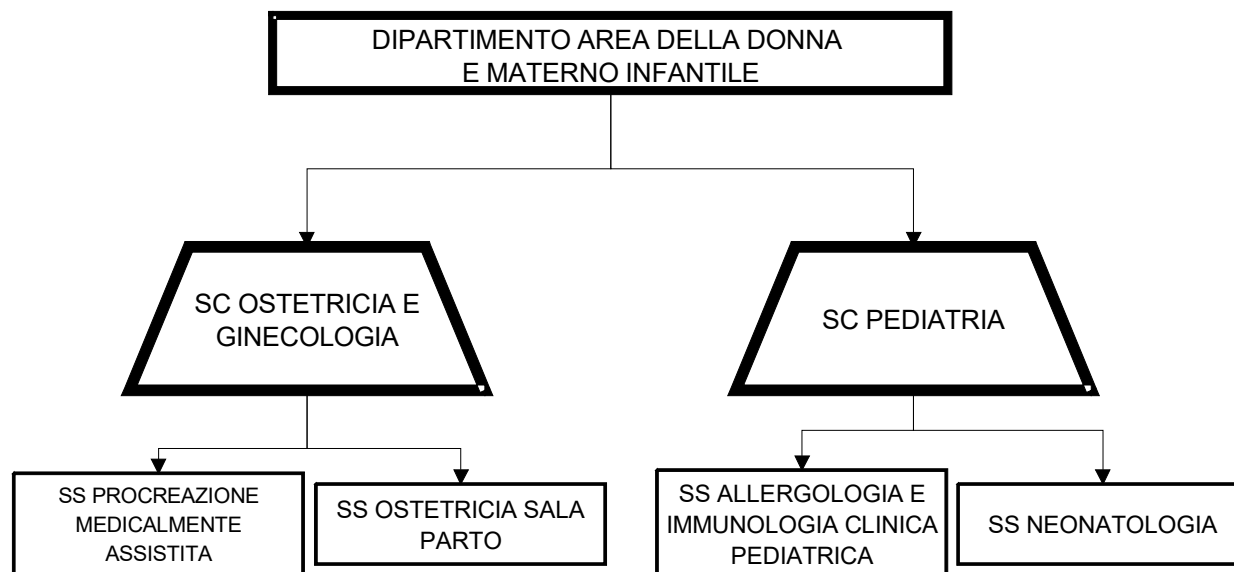


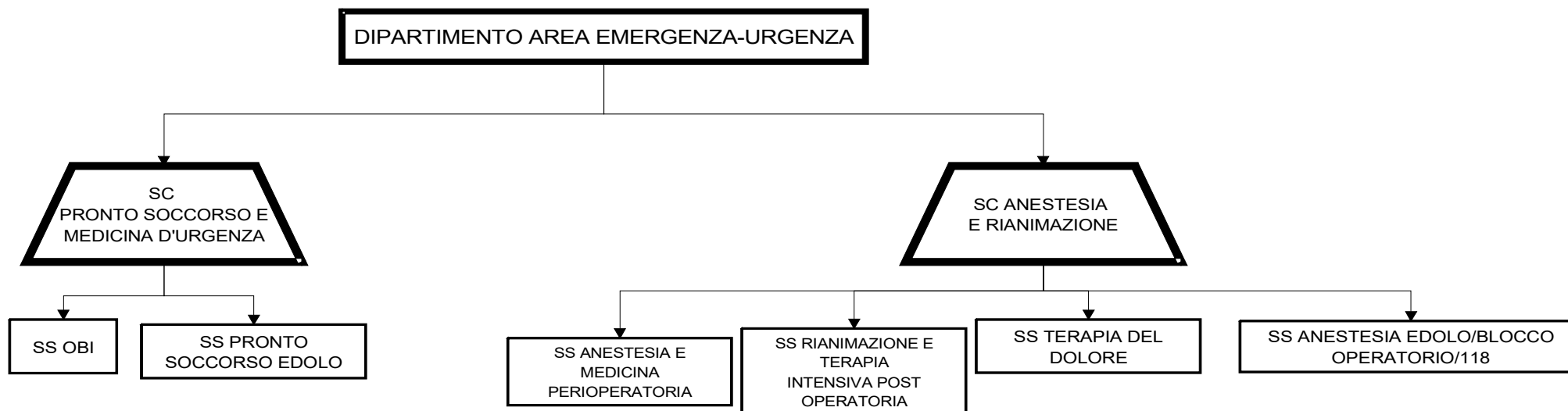


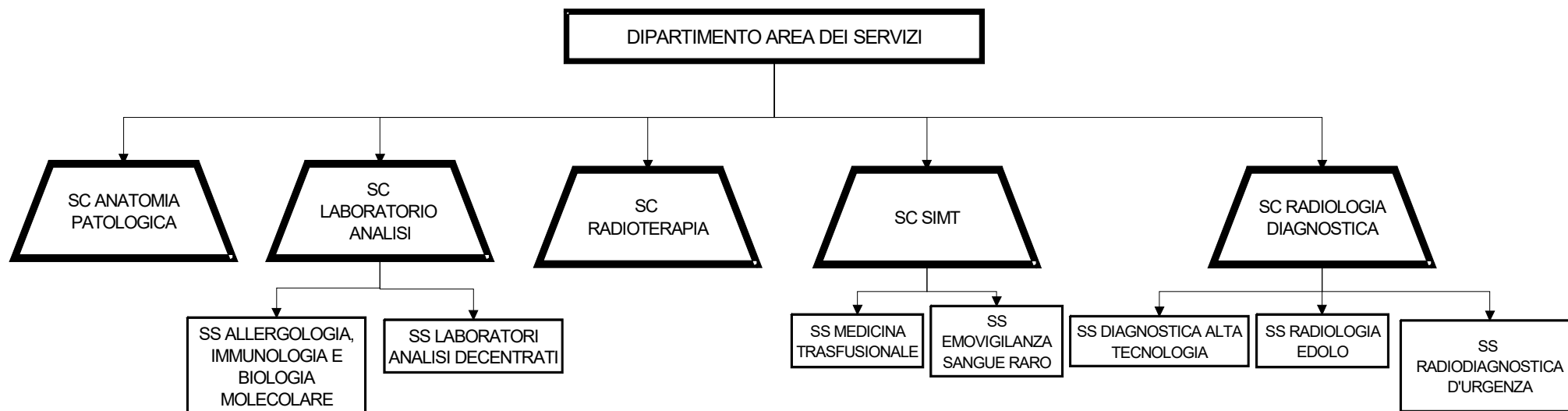


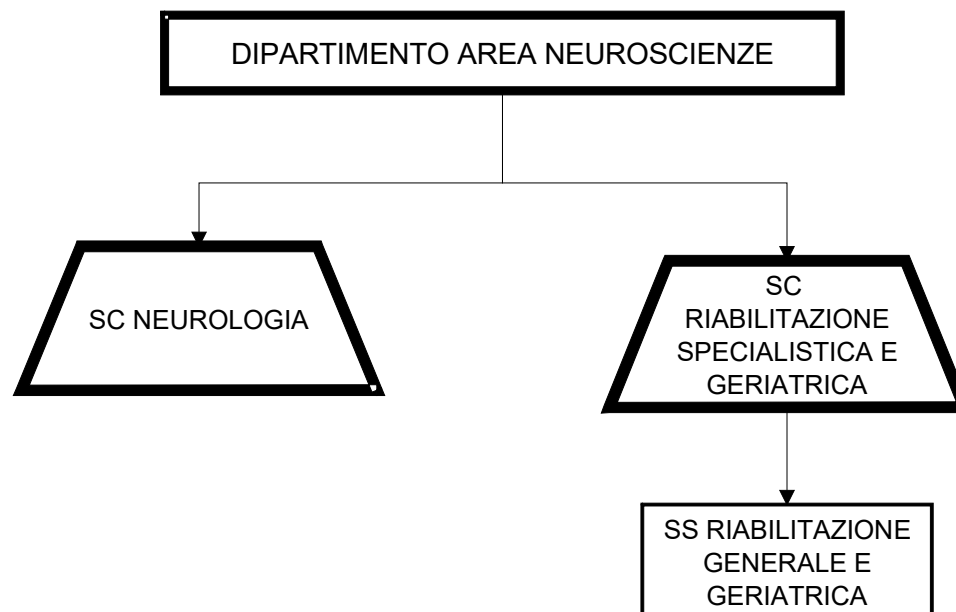


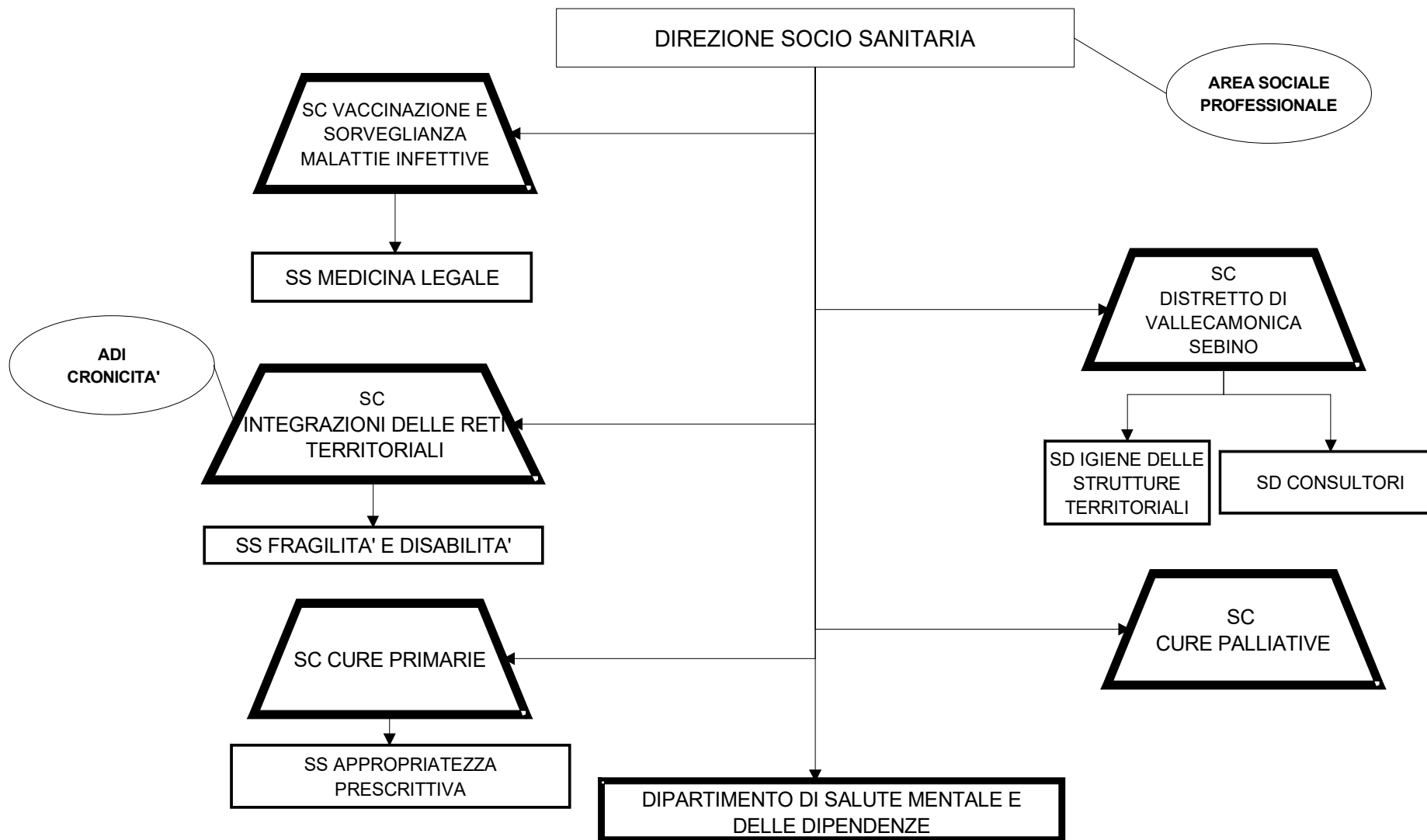


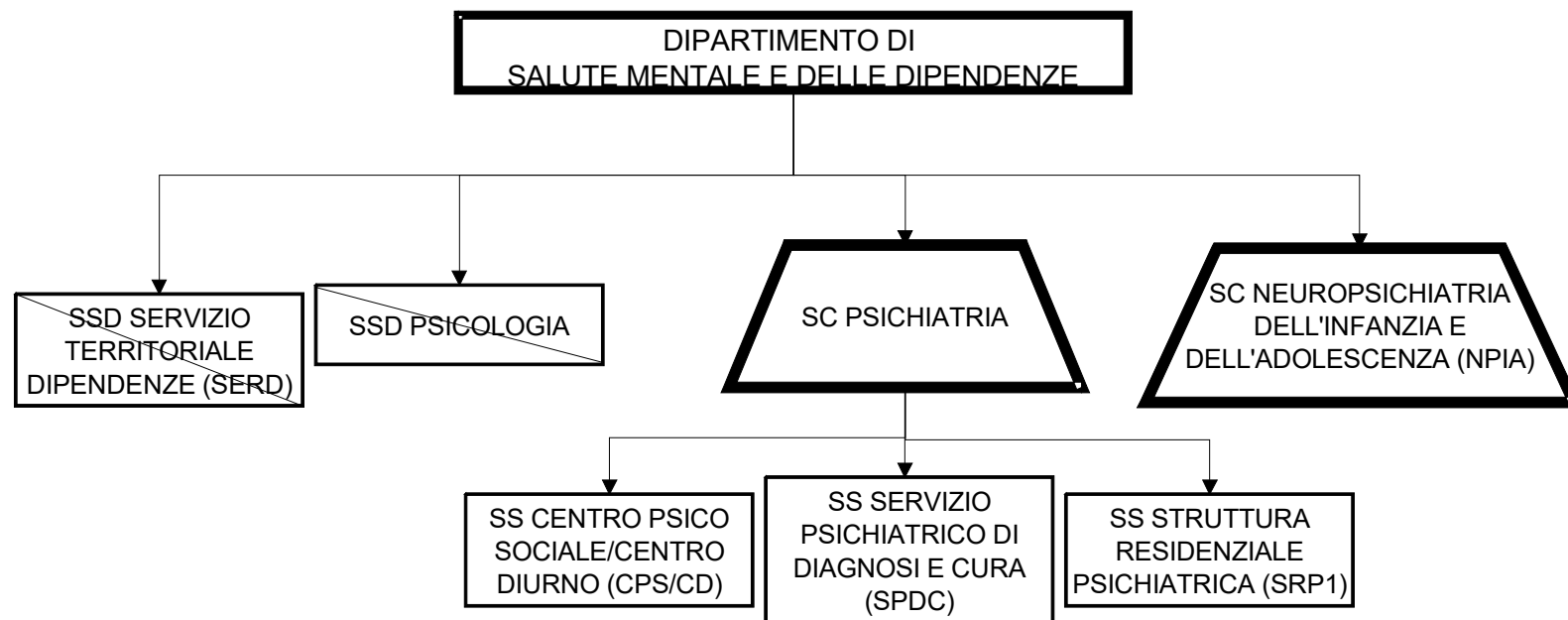




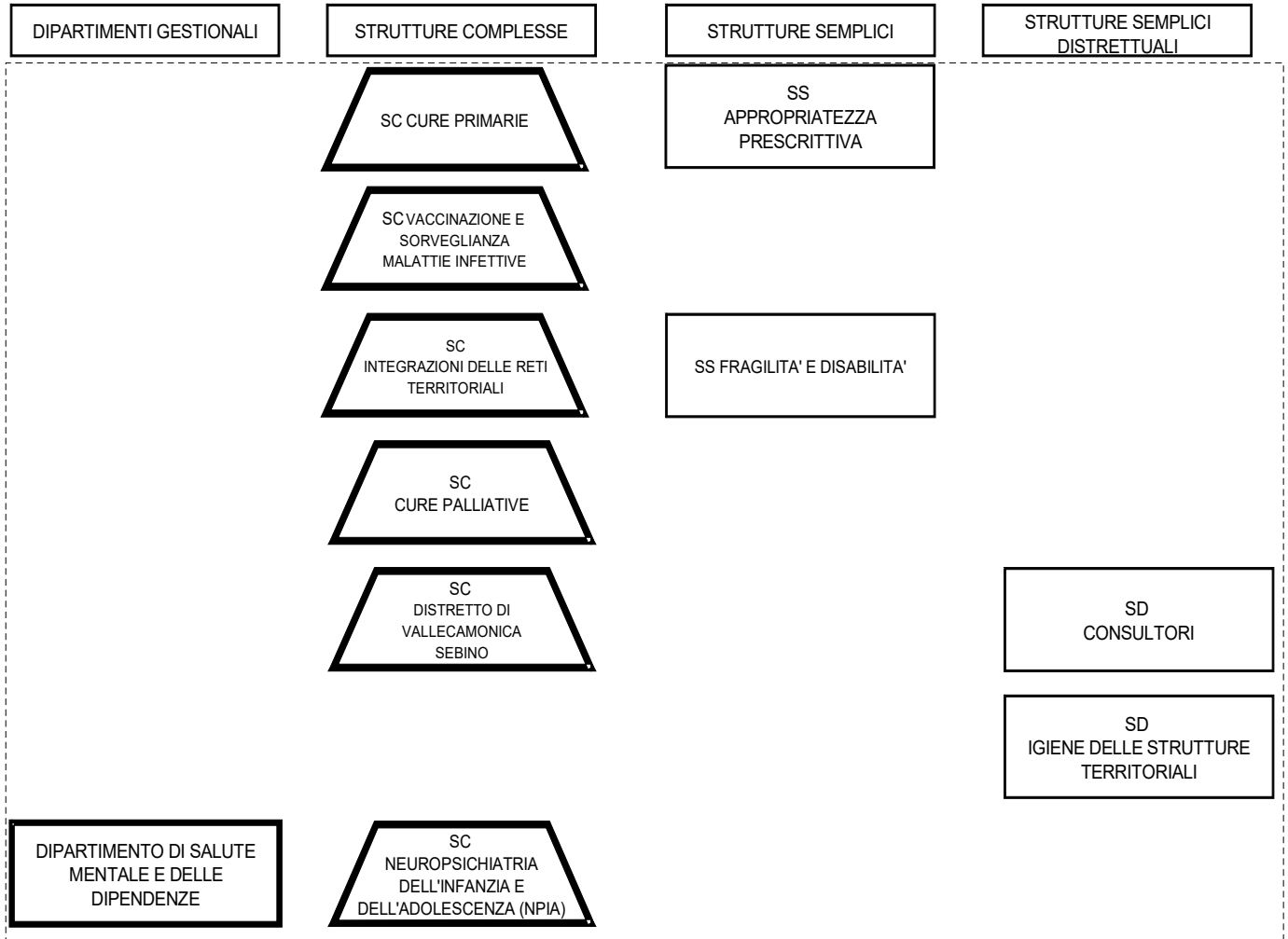




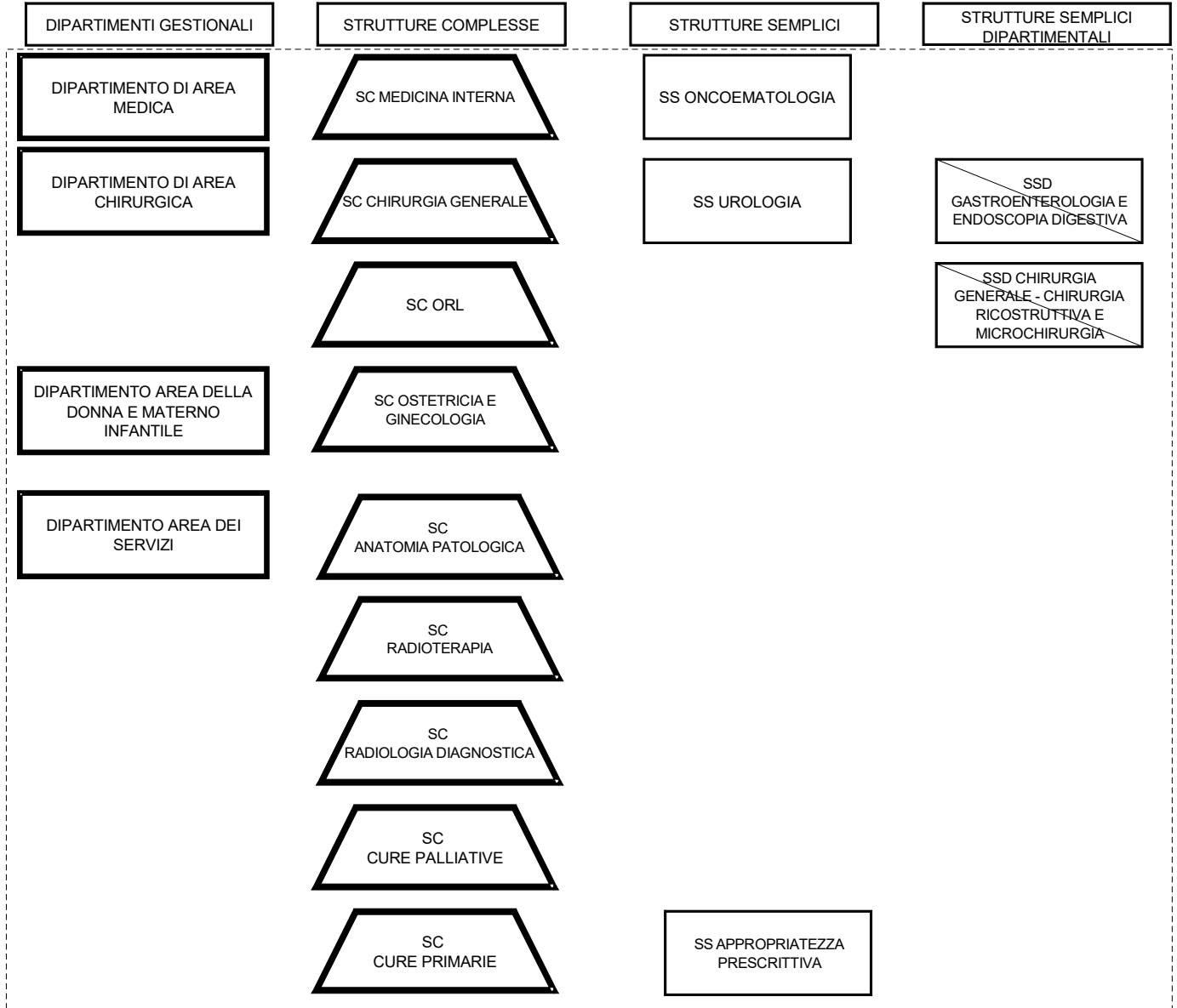




DIPARTIMENTO FUNZIONALE CURE PRIMARIE

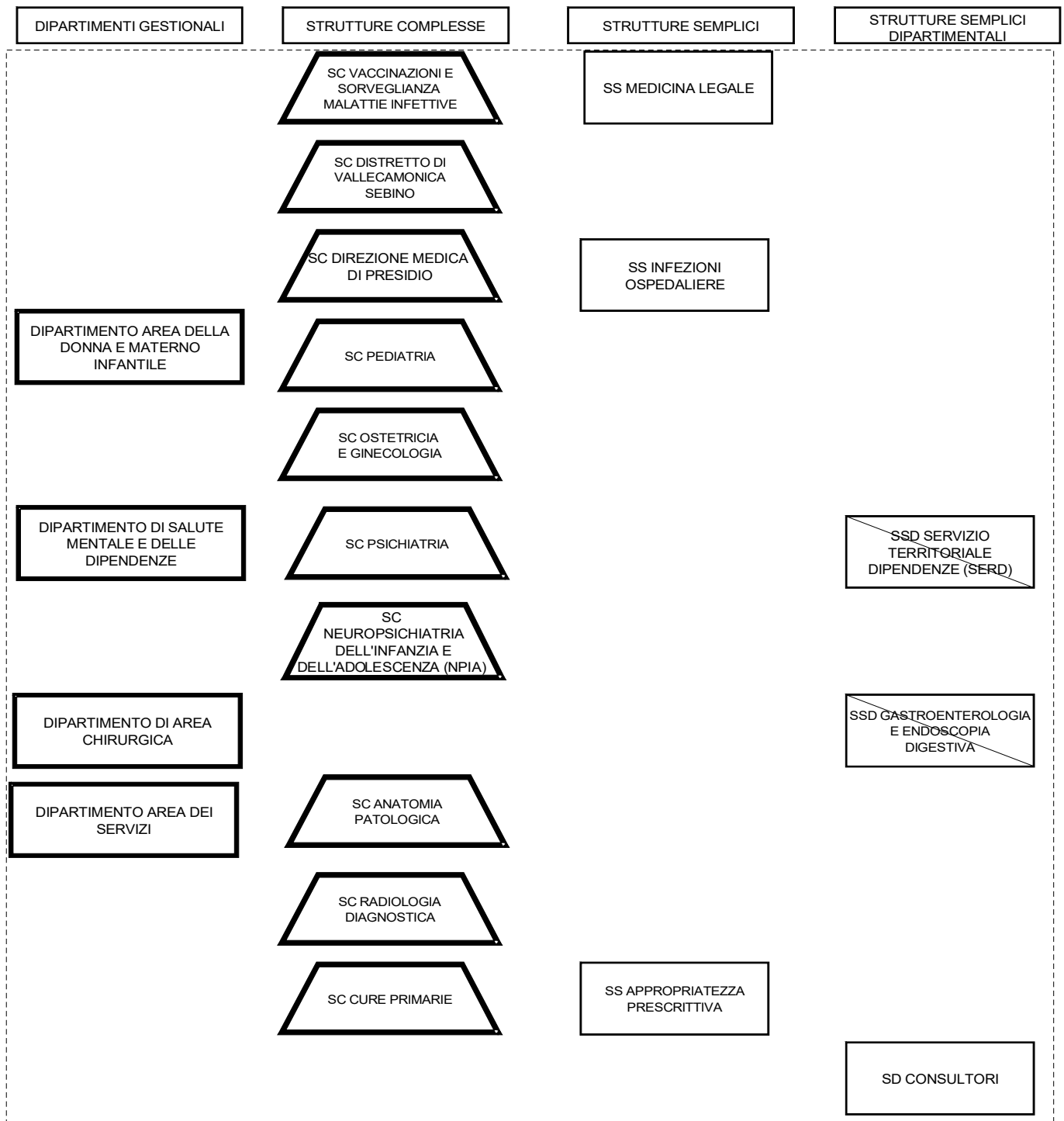


DIPARTIMENTO FUNZIONALE ONCOLOGICO



DIPARTIMENTO FUNZIONALE DI PREVENZIONE

in coordinamento con il Dipartimento di Igiene e Prevenzione Sanitaria (DIPS) di ATS Montagna





**DIPARTIMENTO FUNZIONALE INTERAZIENDALE
OSTETRICO - GINECOLOGICO E NEONATOLOGICO
ASST SPEDALI CIVILI - ASST VALCAMONICA**

DIPARTIMENTI GESTIONALI

STRUTTURE COMPLESSE

STRUTTURE SEMPLICI

STRUTTURE SEMPLICI
DIPARTIMENTALI

DIPARTIMENTO AREA DELLA
DONNA E MATERNO
INFANTILE

SC OSTETRICIA E
GINECOLOGIA

SS OSTETRICIA E SALA
PARTO

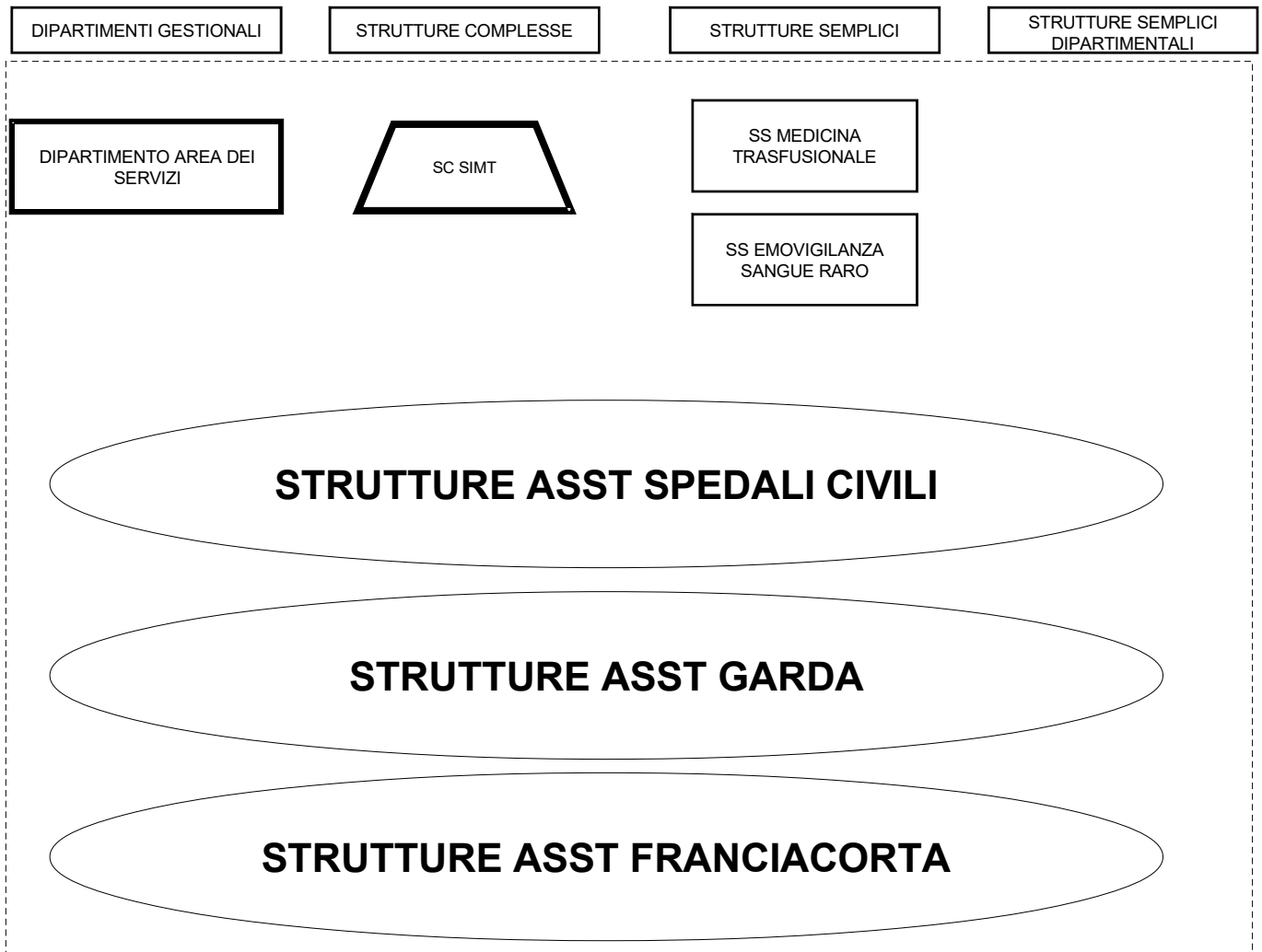
SS PROCREAZIONE
MEDICALMENTE
ASSISTITA

SD CONSULTORI

STRUTTURE ASST SPEDALI CIVILI

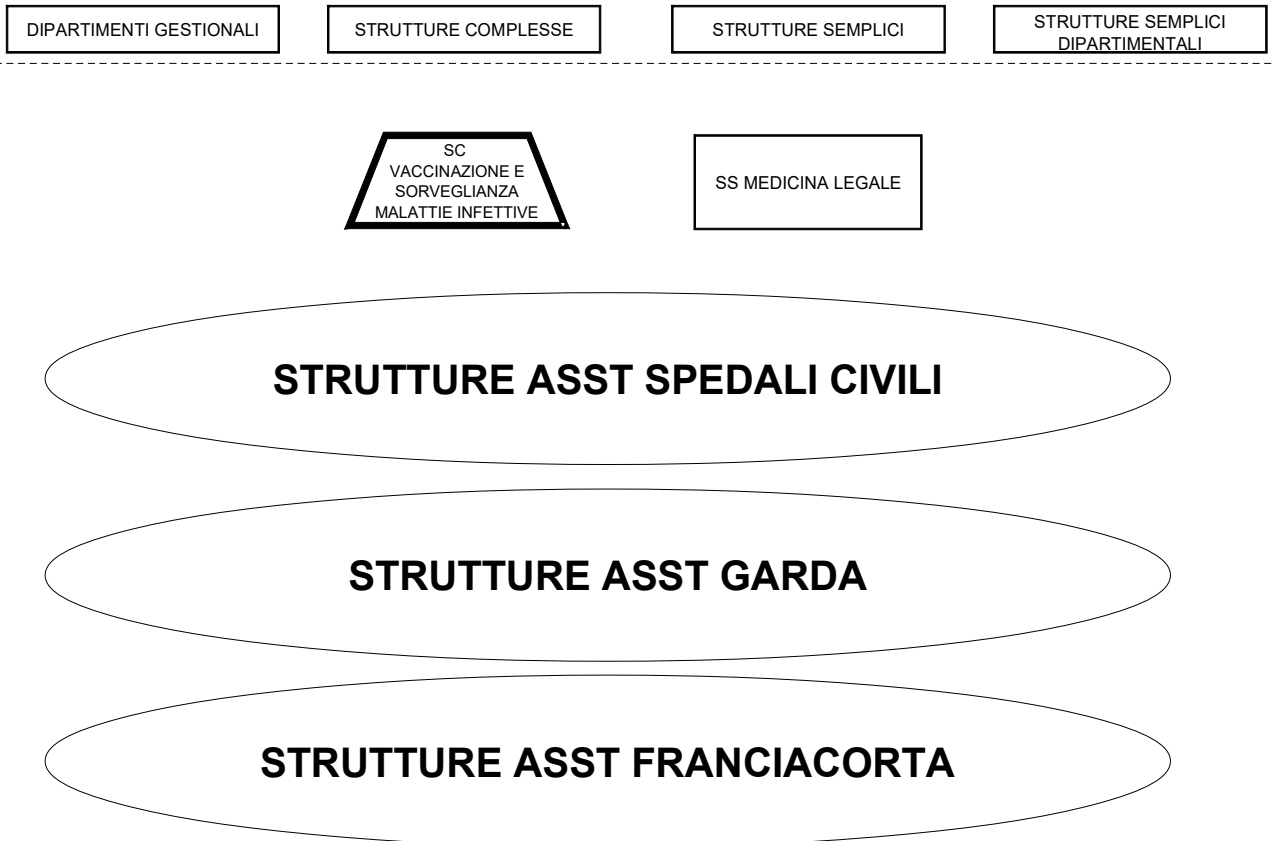


DIPARTIMENTO FUNZIONALE INTERAZIENDALE DMTE
ASST SPEDALI CIVILI - ASST VALCAMONICA - ASST GARDA - ASST FRANCIACORTA

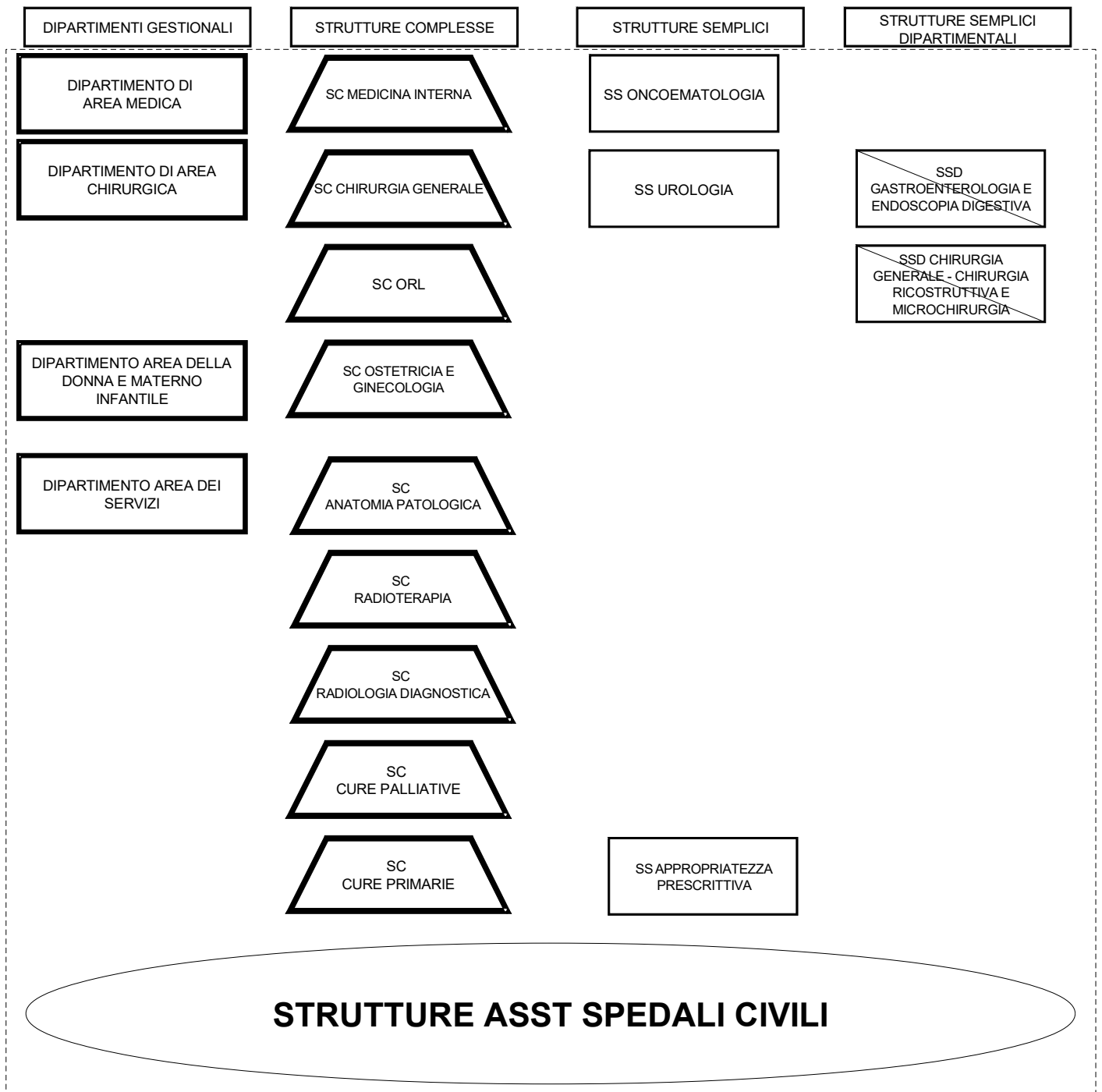




**DIPARTIMENTO FUNZIONALE INTERAZIENDALE MEDICINA LEGALE
ASST SPEDALI CIVILI - ASST VALCAMONICA - ASST GARDA - ASST FRANCIACORTA**



DIPARTIMENTO FUNZIONALE INTERAZIENDALE ONCOLOGICO
ASST SPEDALI CIVILI - ASST VALCAMONICA (EX DIPO)





DIPARTIMENTO FUNZIONALE INTERAZIENDALE PEDIATRICO

ASST SPEDALI CIVILI - ASST VALCAMONICA

DIPARTIMENTI GESTIONALI

STRUTTURE COMPLESSE

STRUTTURE SEMPLICI

STRUTTURE SEMPLICI
DIPARTIMENTALI

DIPARTIMENTO AREA DELLA
DONNA E MATERNO
INFANTILE

SC PEDIATRIA

SS ALLERGOLOGIA E
IMMUNOLOGIA CLINICA
PEDIATRICA

SS NEONATOLOGIA

STRUTTURE ASST SPEDALI CIVILI

