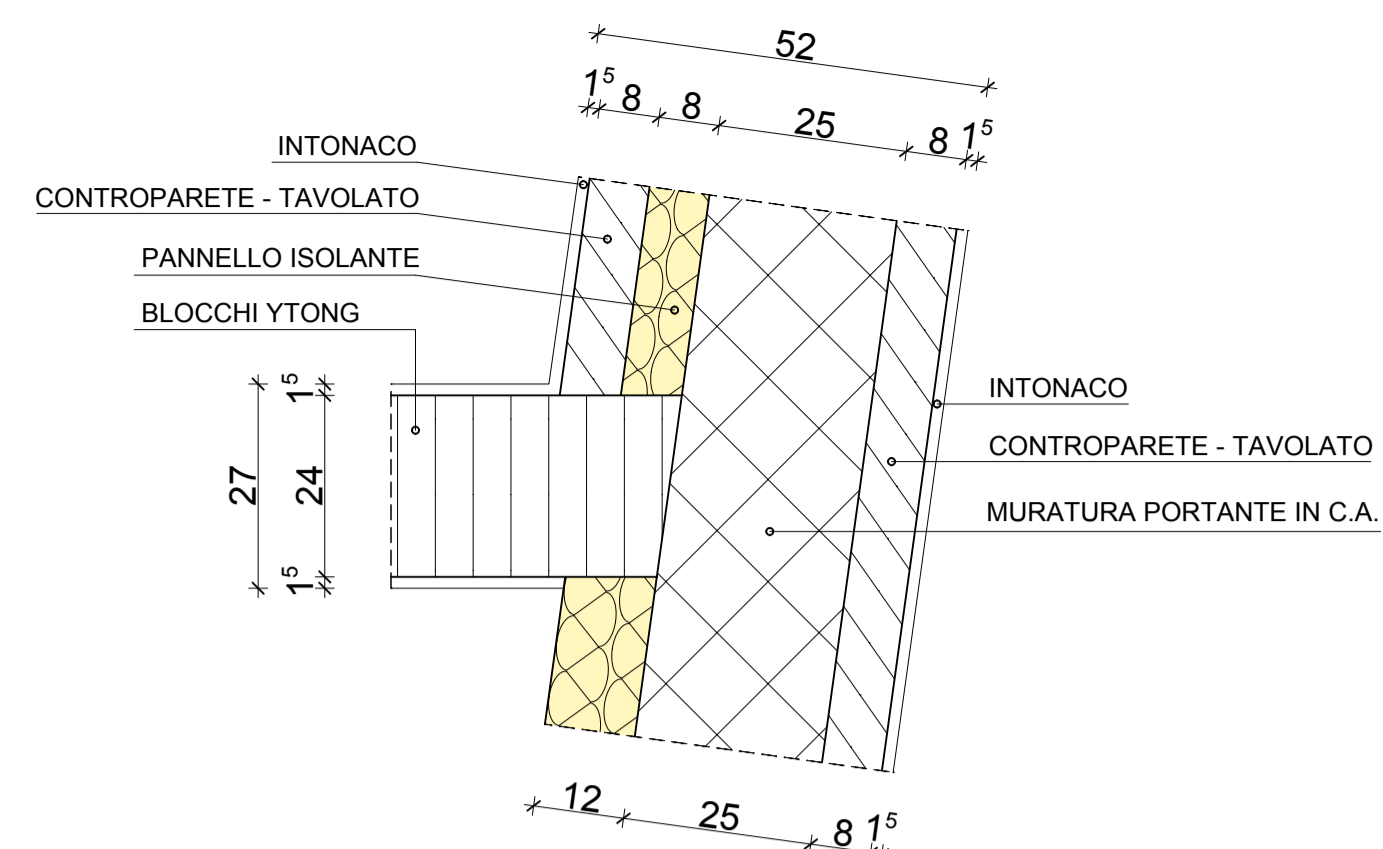
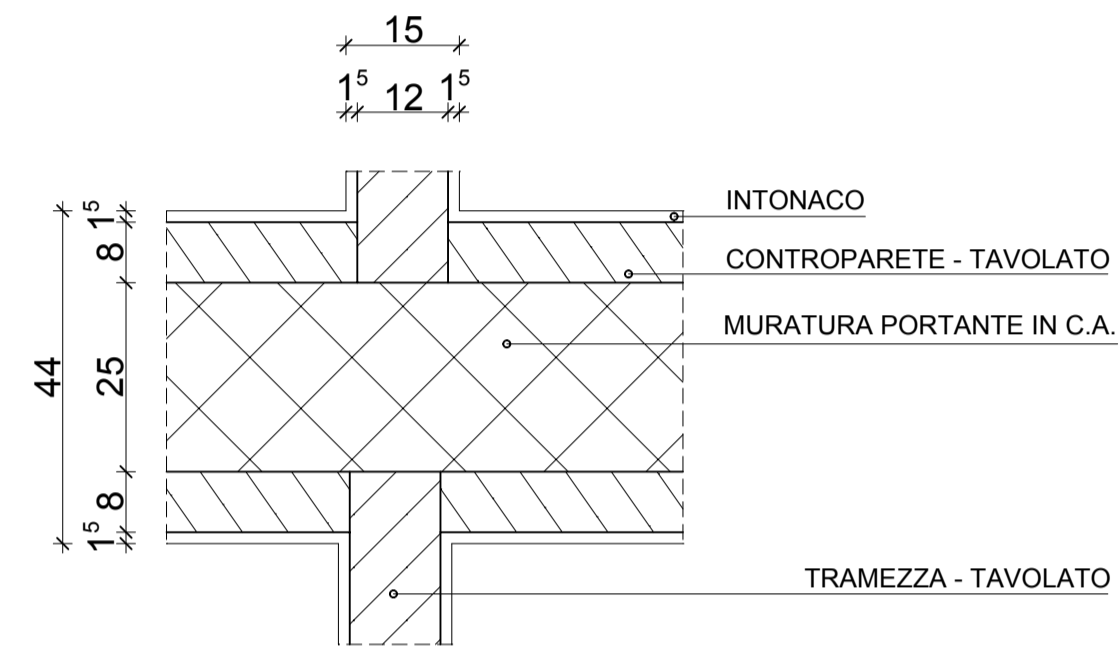


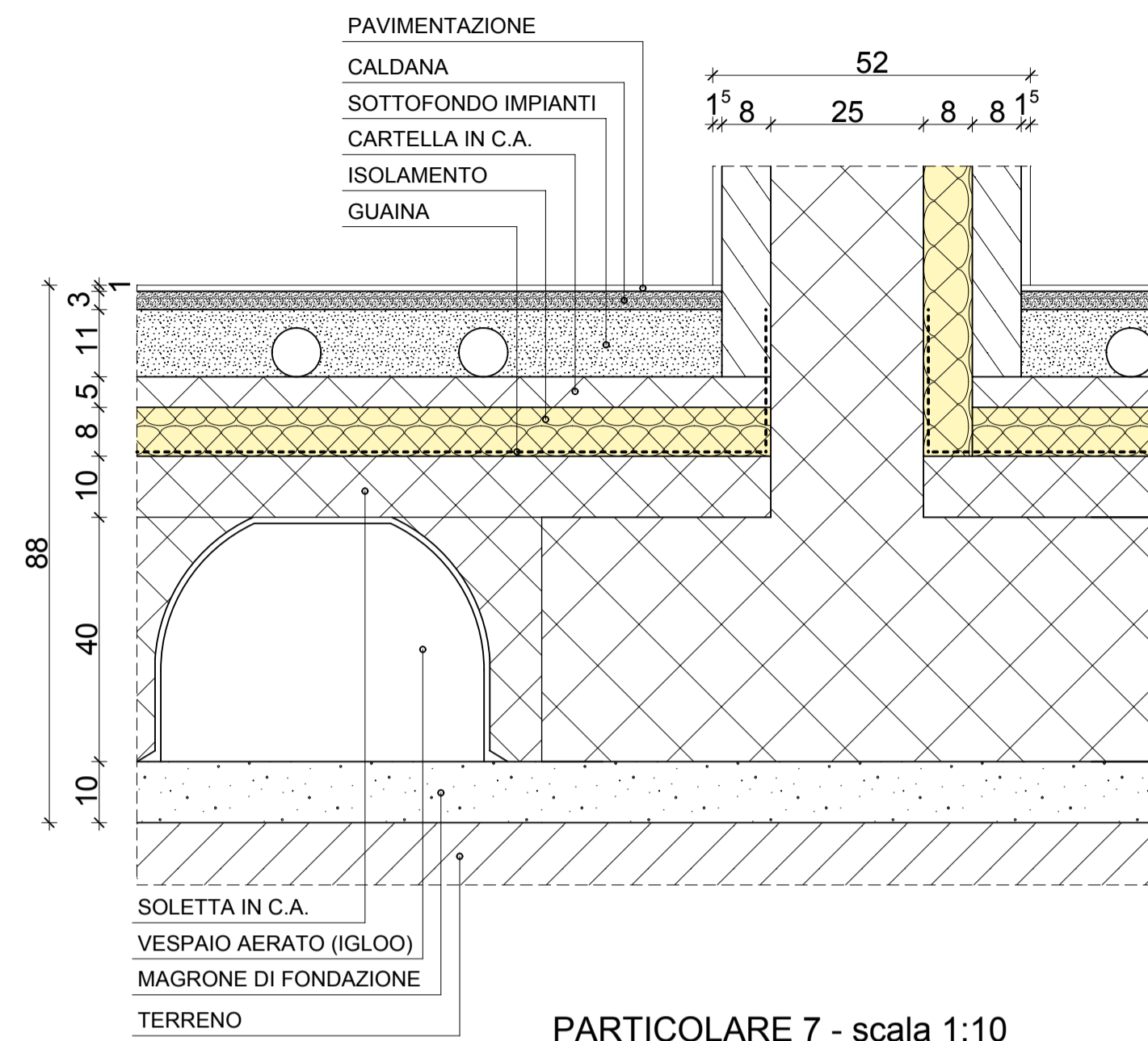
PARTICOLARE 1 - scala 1:10



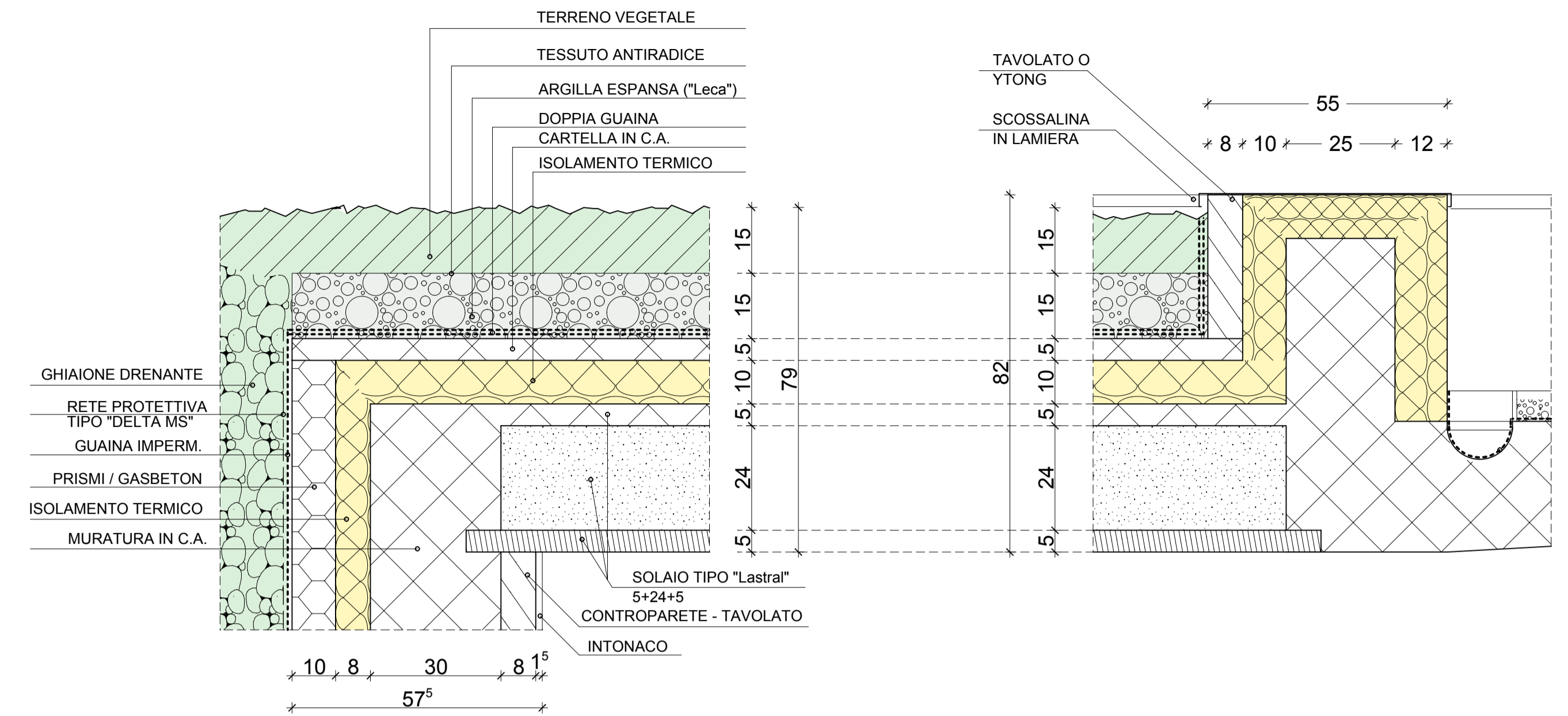
PARTICOLARE 4 - scala 1:10



PARTICOLARE 5 - scala 1:10

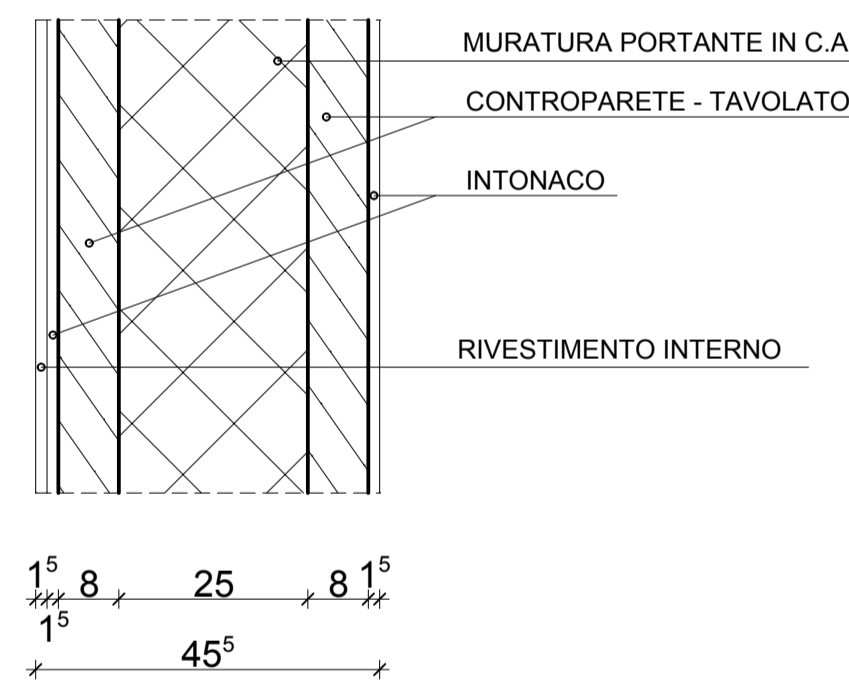


PARTICOLARE 7 - scala 1:10

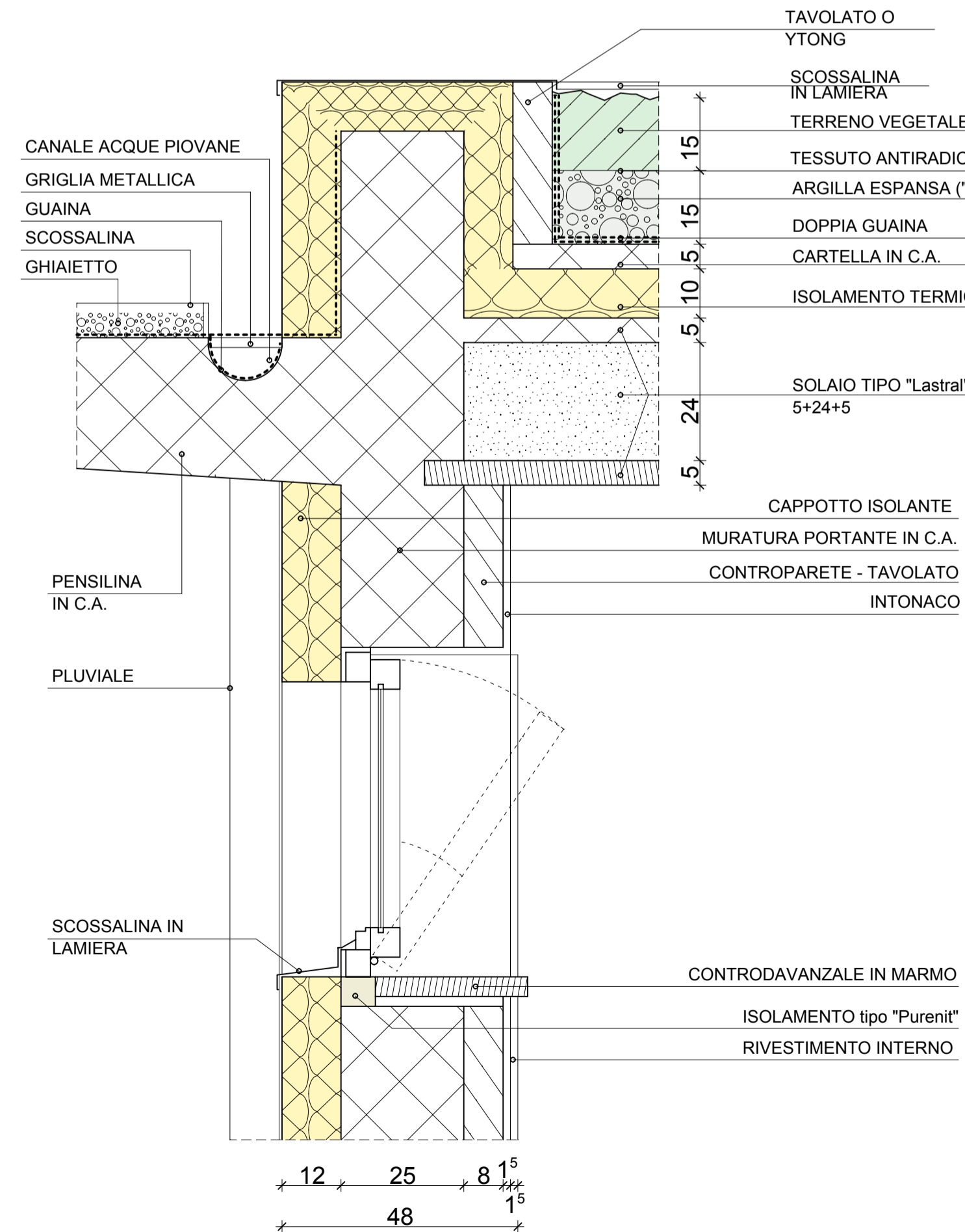


PARTICOLARE 10 - scala 1:10

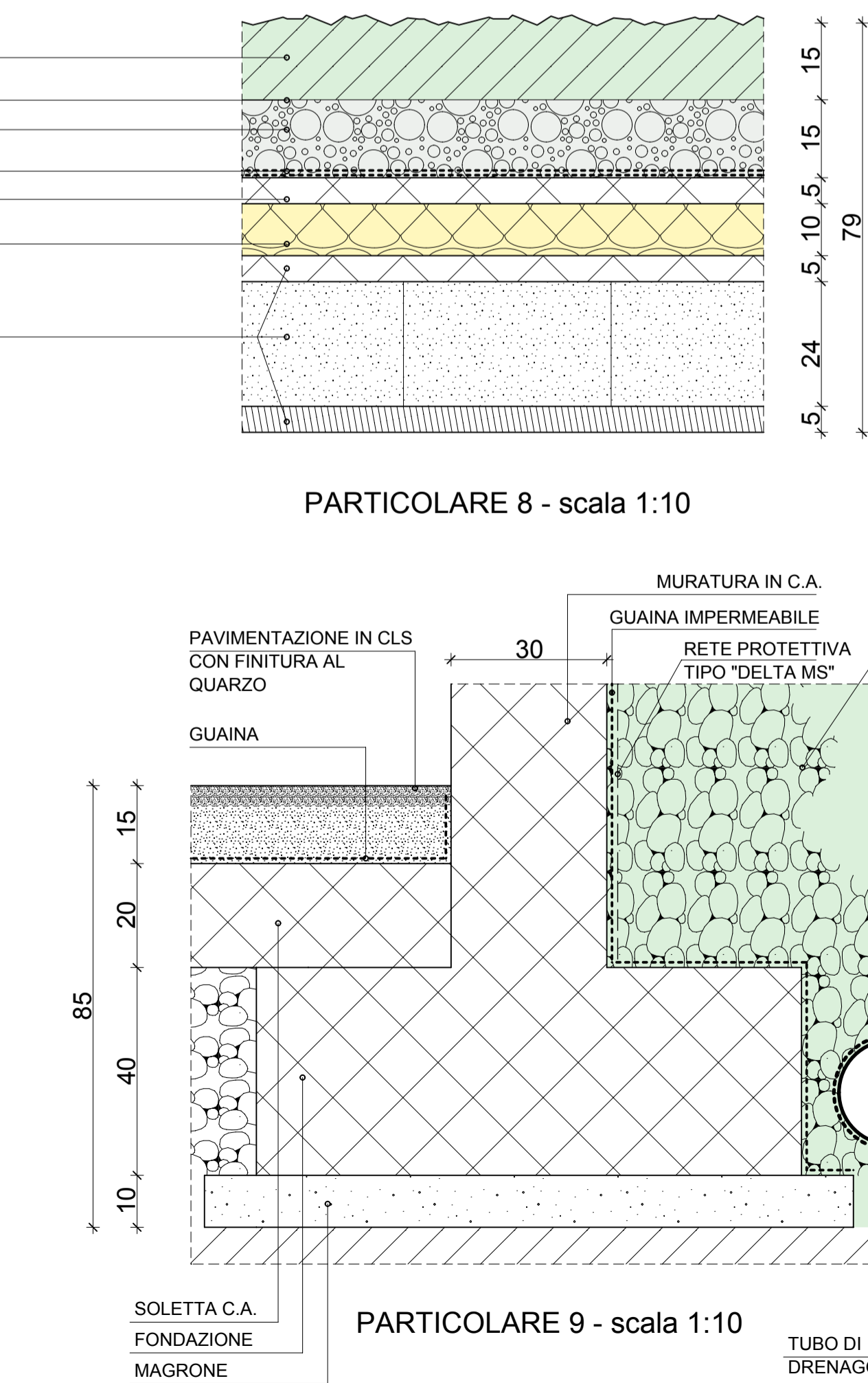
PARTICOLARE 12 - scala 1:10



PARTICOLARE 2 - scala 1:10

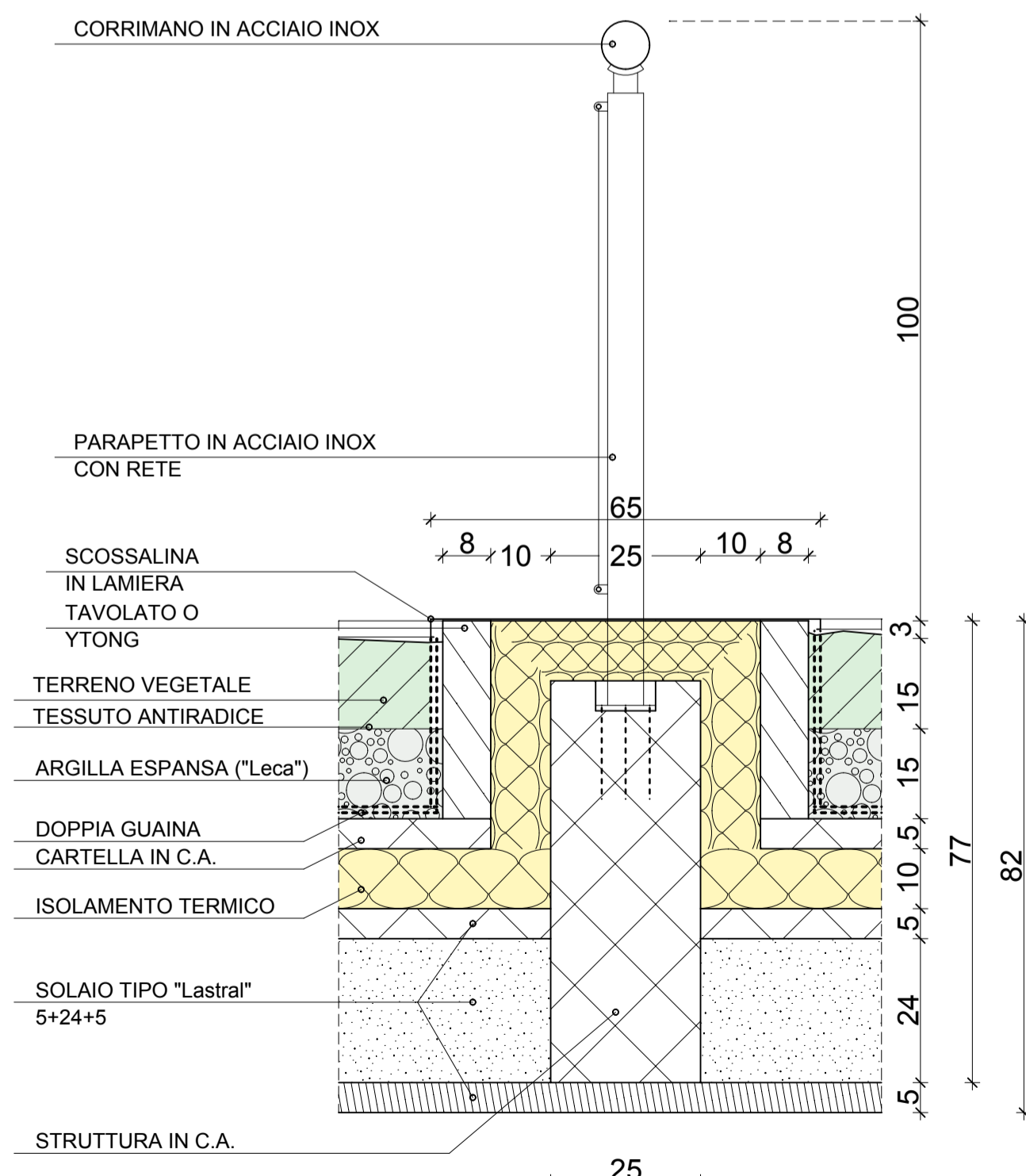


PARTICOLARE 6 - scala 1:10

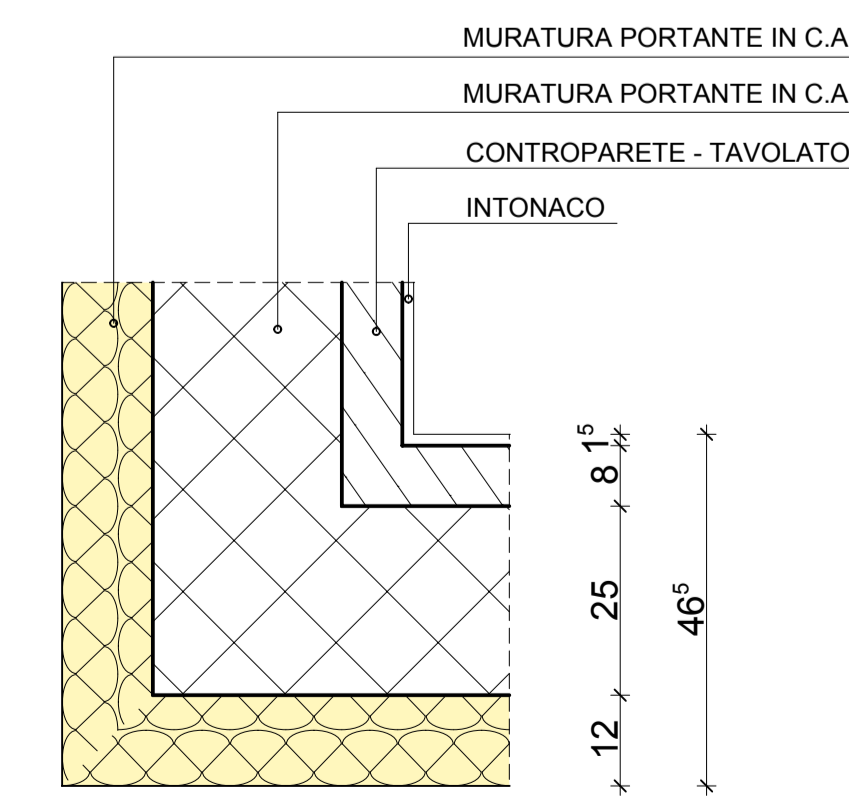


PARTICOLARE 8 - scala 1:10

PARTICOLARE 9 - scala 1:10



PARTICOLARE 11 - scala 1:10



PARTICOLARE 3 - scala 1:10



n°	data	autore	causale della revisione
n°4	2018.09.27	PIU	aggiornamento
n°3	2018.09.03	PIU	aggiornamento
n°2	2018.08.20	PIU	aggiornamento
n°1	2018.08.03	PIU	aggiornamento stratigrafico
n°rev.			causale della revisione

committente Comune di Monte Isola Loc. Siviano, n° 76 25050 Monte Isola (BS)		denominazione disegno <b>ESECUTIVI</b> PARTICULARI COSTRUTTIVI	
progetto REALIZZAZIONE SPOGLIATOI PER CAMPO SPORTIVO Loc. Mazzino - Monte Isola (BS)		codice <b>01217</b>	
Studio Tecnico Associato GOBBI - GUERRINI via Martiri della Libertà n°44 25010 Borgosatollo (BS) tel. 032.2702300 e-mail sta@borgosatollo.it p.i. e.c.f. 03127070179		scala 1:10	lavoro n° <b>A06</b>
collaboratore arch. PIU	controllo data controllo	approvato data approvazione	responsabile del progetto data controllo data approvazione